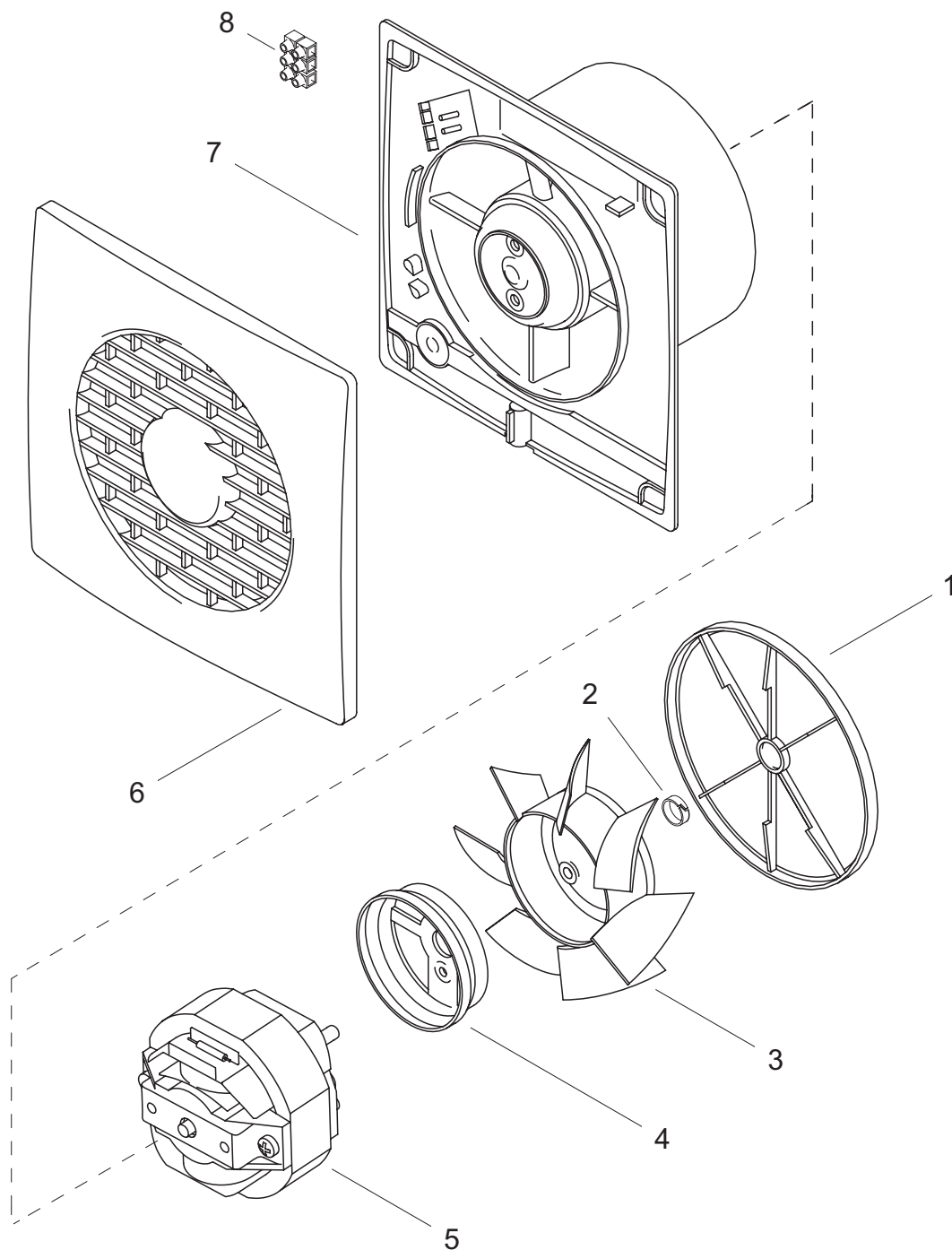


MF 100/4" LL

REV. 03
22/03/2013

IT	Cod. 11131 - 230-240V ~ 50 Hz
EN	Cod. 11131 - 230-240V ~ 50 Hz
FR	Cod. 11131 - 230-240V ~ 50 Hz
DE	Cod. 11131 - 230-240V ~ 50 Hz



VORTICE ELETTROSOCIALI S.p.A.
Strada Cerca, 2 - frazione di Zoate
20067 TRIBIANO (MI)
Tel. (+39) 02-90.69.91
Fax (+39) 02-90.64.625
ITALIA

VORTICE LIMITED
Beeches House - Eastern
Avenue
Burton on Trent
DE13 0BB
Tel. (+44) 1283-492949
Fax (+44) 1283-544121
UNITED KINGDOM

VORTICE FRANCE
15/33 Rue Le Corbusier
Europarc - CS 30007
94046 CRETEIL Cedex
Tel. (+33) 1-55.12.50.00
Fax (+33) 1-55.12.50.01
FRANCE

COD. 9994000067

MF 100/4'' LL

REV. 03
22/03/2013

IT Cod. 11131 - 230-240V ~ 50 Hz

EN Cod. 11131 - 230-240V ~ 50 Hz

FR Cod. 11131 - 230-240V ~ 50 Hz

DE Cod. 11131 - 230-240V ~ 50 Hz



Ref.	Cod.	Descrizione	Description	Description	Beschreibung
1	1.174.000.005	Valvola di non ritorno	Check valve	Soupape de retenue	Rückschlagventil MF 90/3.5
2	5.001.176.060	Anello SCB/2	Ring SCB/2	Bague SCB/2	Ring SCB/2
3	1.211.132.011	Girante	Impeller	Turbine	Läufer
4	1.103.111.002	Coprimotore	Motor cover	Couvercle moteur	Gehäuse
5	1.325.000.477	Motore	Motor	Moteur	Motor
6	1.235.001.076	Griglia	Grid	Grille	Flansch
7	1.259.001.030	Portamotore	Motor support	Porte-moteur	Motorträger
8	5.310.086.001	Morsettiera PA/35/2 FV	Terminal board PA/35/2 FV	Barrette PA/35/2 FV	Klemmleiste
*	5.256.084.064	Imballo	Packaging	Emballagr	Verpackung

- I disegni dei prodotti e dei loro componenti, potrebbero non rappresentarne la forma originale.
- The drawings of the products or their components may differ from their actual original shape.
- Les dessins des produits ou de leur composants peuvent être différents de leur formes originelles.
- Die Bilder der Produkten oder ihrer Bestandteilen könnten ihrer Originalform nicht entsprechen.

VORTICE ELETTROSOCIALI S.p.A.
Strada Cerca, 2 - frazione di Zoate
20067 TRIBIANO (MI)
Tel. (+39) 02-90.69.91
Fax (+39) 02-90.64.625
ITALIA

VORTICE LIMITED
Beeches House - Eastern
Avenue
Burton on Trent
DE13 0BB
Tel. (+44) 1283-492949
Fax (+44) 1283-544121
UNITED KINGDOM

VORTICE FRANCE
15/33 Rue Le Corbusier
Europarc - CS 30007
94046 CRETEIL Cedex
Tel. (+33) 1-55.12.50.00
Fax (+33) 1-55.12.50.01
FRANCE

COD. 9994000067