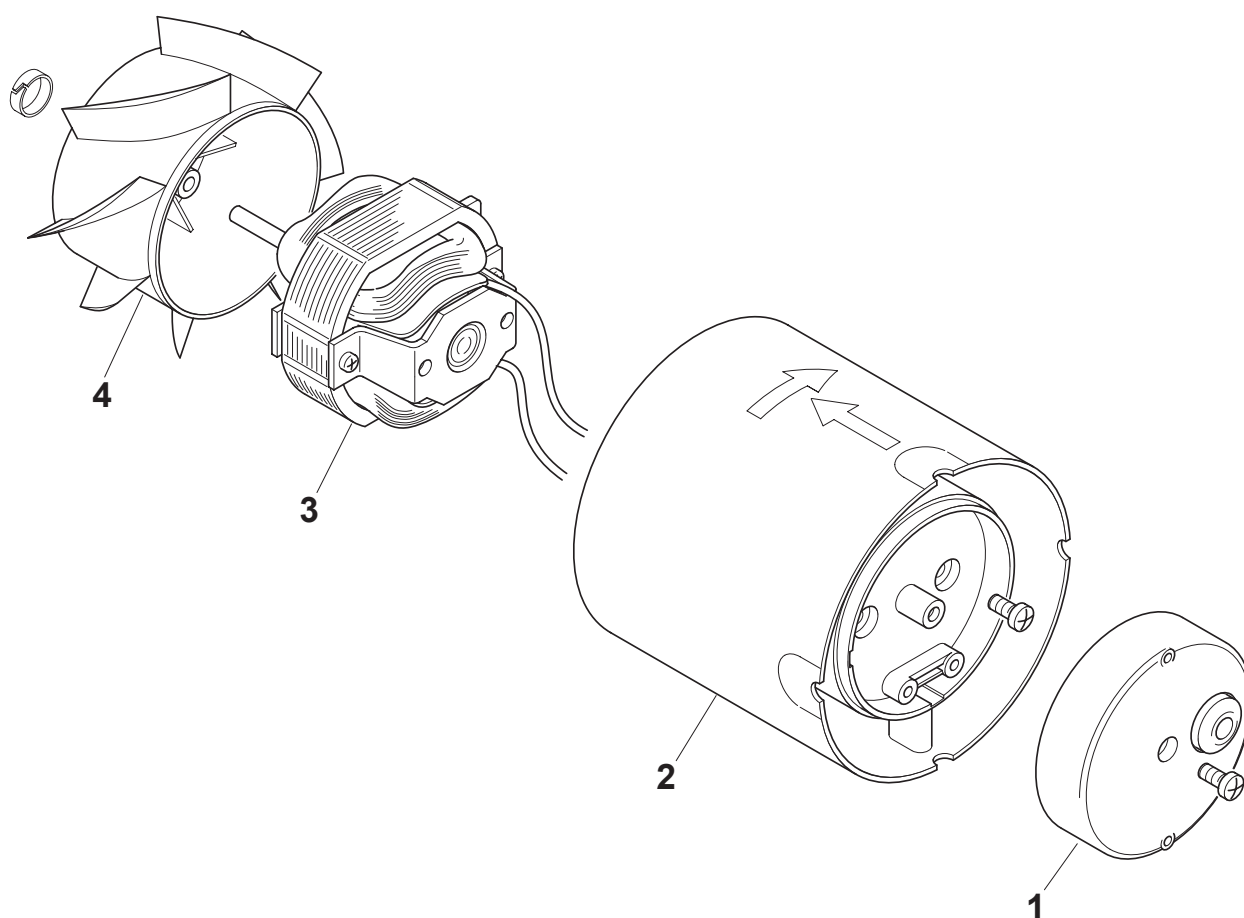


MG 150/6''

REV. 01
27/03/2012

| | |
|-----------|-------------------------------|
| IT | Cod. 11117 - 230-240V ~ 50 Hz |
| EN | Cod. 11117 - 230-240V ~ 50 Hz |
| FR | Cod. 11117 - 230-240V ~ 50 Hz |
| DE | Cod. 11117 - 230-240V ~ 50 Hz |



VORTICE ELETTROSOCIALI S.p.A.
Strada Cerca, 2 - frazione di Zoate
20067 TRIBIANO (MI)
Tel. (+39) 02-90.69.91
Fax (+39) 02-90.64.625
ITALIA

VORTICE LIMITED
Beeches House - Eastern
Avenue
Burton on Trent
DE13 0BB
Tel. (+44) 1283-492949
Fax (+44) 1283-544121
UNITED KINGDOM

VORTICE FRANCE
15/33 Rue Le Corbusier
Europarc
94046 CRETEIL Cedex
Tel. (+33) 1-55.12.50.00
Fax (+33) 1-55.12.50.01
FRANCE

COD. 9994000889

MG 150/6''

REV. 01
27/03/2012

IT Cod. 11117 - 230-240V ~ 50 Hz

EN Cod. 11117 - 230-240V ~ 50 Hz

FR Cod. 11117 - 230-240V ~ 50 Hz

DE Cod. 11117 - 230-240V ~ 50 Hz



| Ref. | Cod. | Descrizione | Description | Description | Beschreibung |
|------|---------------|------------------------|--------------|---------------|--------------|
| 1 | 1.127.191.031 | Coperchio tampografato | Couvercle | Cover | Abdeckung |
| 2 | 1.529.001.048 | Portamotore | Porte-moteur | Motor support | Motorträger |
| 3 | 1.325.000.398 | Motore | Motor | Moteur | Motor |
| 4 | 1.211.001.022 | Girante | Turbine | Impeller | Läufer |
| * | 5.256.084.108 | Imballo | Packaging | Emballagr | Verpackung |

- I disegni dei prodotti e dei loro componenti, potrebbero non rappresentarne la forma originale.
- The drawings of the products or their components may differ from their actual original shape.
- Les dessins des produits ou de leur composants peuvent être différents de leur formes originelles.
- Die Bilder der Produkten oder ihrer Bestandteilen könnten ihrer Originalform nicht entsprechen.

VORTICE ELETTROSOCIALI S.p.A.
Strada Cerca, 2 - frazione di Zoate
20067 TRIBIANO (MI)
Tel. (+39) 02-90.69.91
Fax (+39) 02-90.64.625
ITALIA

VORTICE LIMITED
Beeches House - Eastern
Avenue
Burton on Trent
DE13 0BB
Tel. (+44) 1283-492949
Fax (+44) 1283-544121
UNITED KINGDOM

VORTICE FRANCE
15/33 Rue Le Corbusier
Europarc
94046 CRETEIL Cedex
Tel. (+33) 1-55.12.50.00
Fax (+33) 1-55.12.50.01
FRANCE

COD. 9994000889