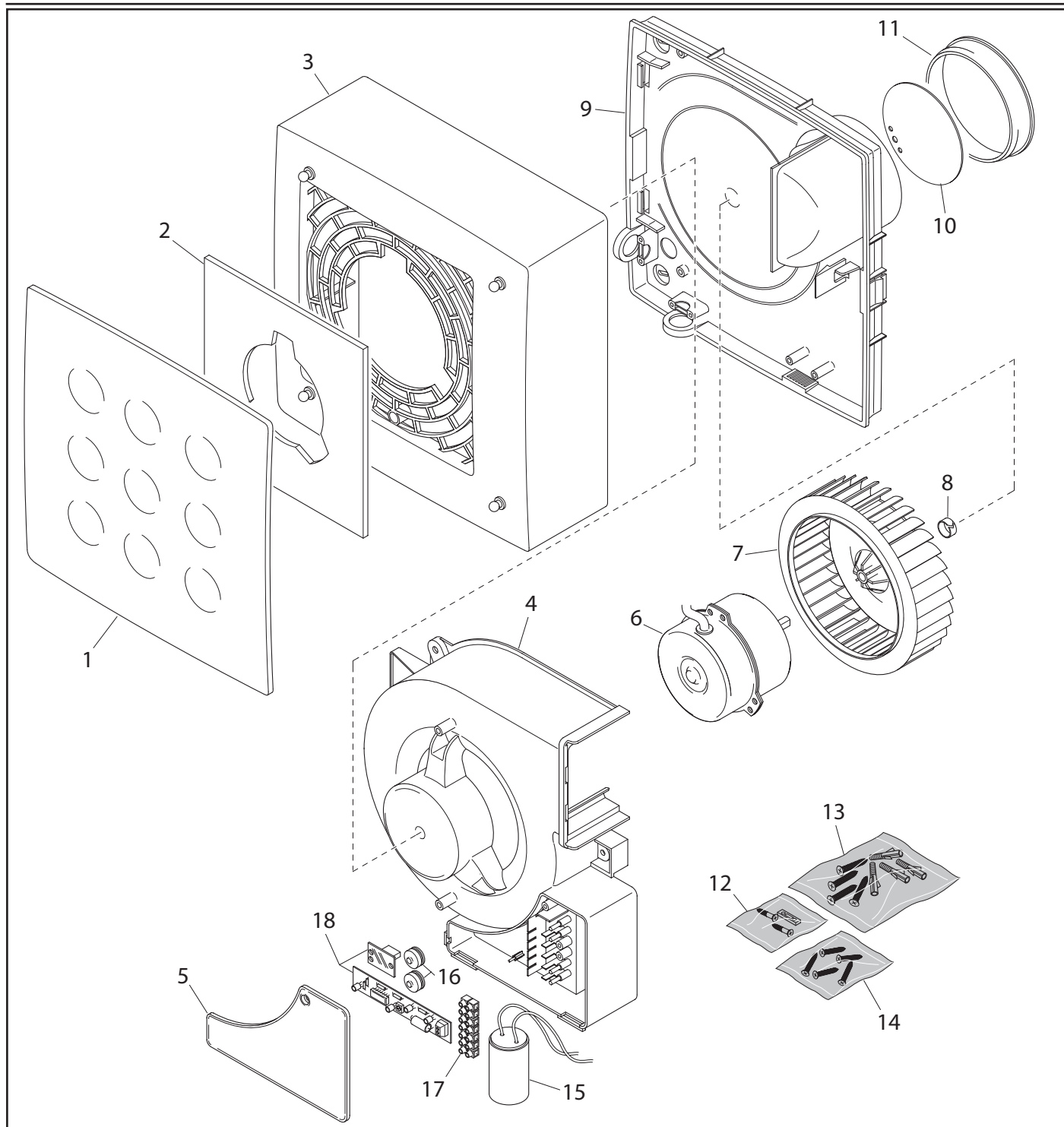


# MEDIO T HCS

REV. 01  
01/08/2011



<b>IT</b>	Cod. 11.975 - 220-240 V ~ 50 Hz
<b>EN</b>	Cod. 11.975 - 220-240 V ~ 50 Hz
<b>FR</b>	Cod. 11.975 - 220-240 V ~ 50 Hz
<b>DE</b>	Cod. 11.975 - 220-240 V ~ 50 Hz



**VORTICE ELETTROSOCIALI S.p.A.**  
Strada Cerca, 2 - frazione di Zoate  
20067 TRIBIANO (MI)  
Tel. (+39) 02-90.69.91  
Fax (+39) 02-90.64.625  
ITALIA

**VORTICE LIMITED**  
Beeches House - Eastern  
Avenue  
Burton on Trent  
DE13 0BB  
Tel. (+44) 1283-492949  
Fax (+44) 1283-544121  
UNITED KINGDOM

**VORTICE FRANCE**  
72 Rue Baratte-Cholet  
94106 Saint Maur Cedex  
Tel. (+33) 1-55.12.50.00  
Fax (+33) 1-55.12.50.01  
FRANCE

COD. 9994000760

# MEDIO T HCS

REV. 01  
01/08/2011



**IT** Cod. 11.975 - 220-240 V ~ 50 Hz

**EN** Cod. 11.975 - 220-240 V ~ 50 Hz

**FR** Cod. 11.975 - 220-240 V ~ 50 Hz

**DE** Cod. 11.975 - 220-240 V ~ 50 Hz

Ref.	Cod.	Descrizione	Description	Description	Beschreibung
1	1.127.001.108	Coperchio piatto Medio	Lid Medio	Couvercle Medio	Gehäuse Medio
2	1.186.047.002	Filtro pur Medio	Filter Medio	Filtre Medio	Filter Medio
3	1.127.001.107	Coperchio Medio	Lid Medio	Couvercle Medio	Gehäuse Medio
4	1.072.126.002	Coclea Medio	Archimedean screw	Coquille	Schnecke
5	1.127.126.051	Coperchio cablaggio Medio	Lid Medio	Couvercle Medio	Gehäuse Medio
6	1.325.000.308	Motore	Motor	Moteur	Motor
7	1.205.132.003	Girante Medio	Impeller Medio	Turbine Medio	Läufer Medio
8	5.001.176.060	Anello SCB/2	Ring SCB/2	Bague SCB/2	Ring SCB/2
9	1.196.126.044	Flangia Medio	Flange	Bride	Flansch
10	5.119.136.007	Membrana	Lock	Fermeture	Klappe
11	1.001.043.001	Anello compensatore	Ring	Bague	Ring
12	2.644.000.108	Sacchetto accessori	Accessories bag	Sachet accessoires	Beutel mit Zubehör
13	2.644.000.187	Sacchetto accessori	Accessories bag	Sachet accessoires	Beutel mit Zubehör
14	2.644.000.191	Sacchetto accessori	Accessories bag	Sachet accessoires	Beutel mit Zubehör
15	5.157.000.134	Condensatore 1 µF 450V	Capacitor 1 µF 450V	Condensateur 1 µF 450V	Kondensator 1 µF450V
16	5.304.061.019	Passacavo	Cable Gland	Passe-cable	Kabeldurchführung
17	5.310.111.054	Morsettiera PA 35/7 WP	Terminal board PA 35/7 WP	Barrette PA 35/7 WP	Klemmleiste PA 35/7 WP
18	5.247.000.647	Circuito HCS	Card HCS	Fiche minuterie HCS	Karte HCS
*	5.255.084.607	Imballo	Packaging	Emballage	Einzelverpackung

- I disegni dei prodotti e dei loro componenti, potrebbero non rappresentarne la forma originale.  
- The drawings of the products or their components may differ from their actual original shape.  
- Les dessins des produits ou de leur composants peuvent être différents de leur formes originelles.  
- Die Bilder der Produkten oder ihrer Bestandteilen könnten ihrer Originalform nicht entsprechen.

## VORTICE ELETTROSOCIALI S.p.A.

Strada Cerca, 2 - frazione di Zoate  
20067 TRIBIANO (MI)  
Tel. (+39) 02-90.69.91  
Fax (+39) 02-90.64.625  
ITALIA

## VORTICE LIMITED

Beeches House - Eastern  
Avenue  
Burton on Trent  
DE13 0BB  
Tel. (+44) 1283-492949  
Fax (+44) 1283-544121  
UNITED KINGDOM

## VORTICE FRANCE

72 Rue Baratte-Cholet  
94106 Saint Maur Cedex  
Tel. (+33) 1-55.12.50.00  
Fax (+33) 1-55.12.50.01  
FRANCE

COD. 9994000760