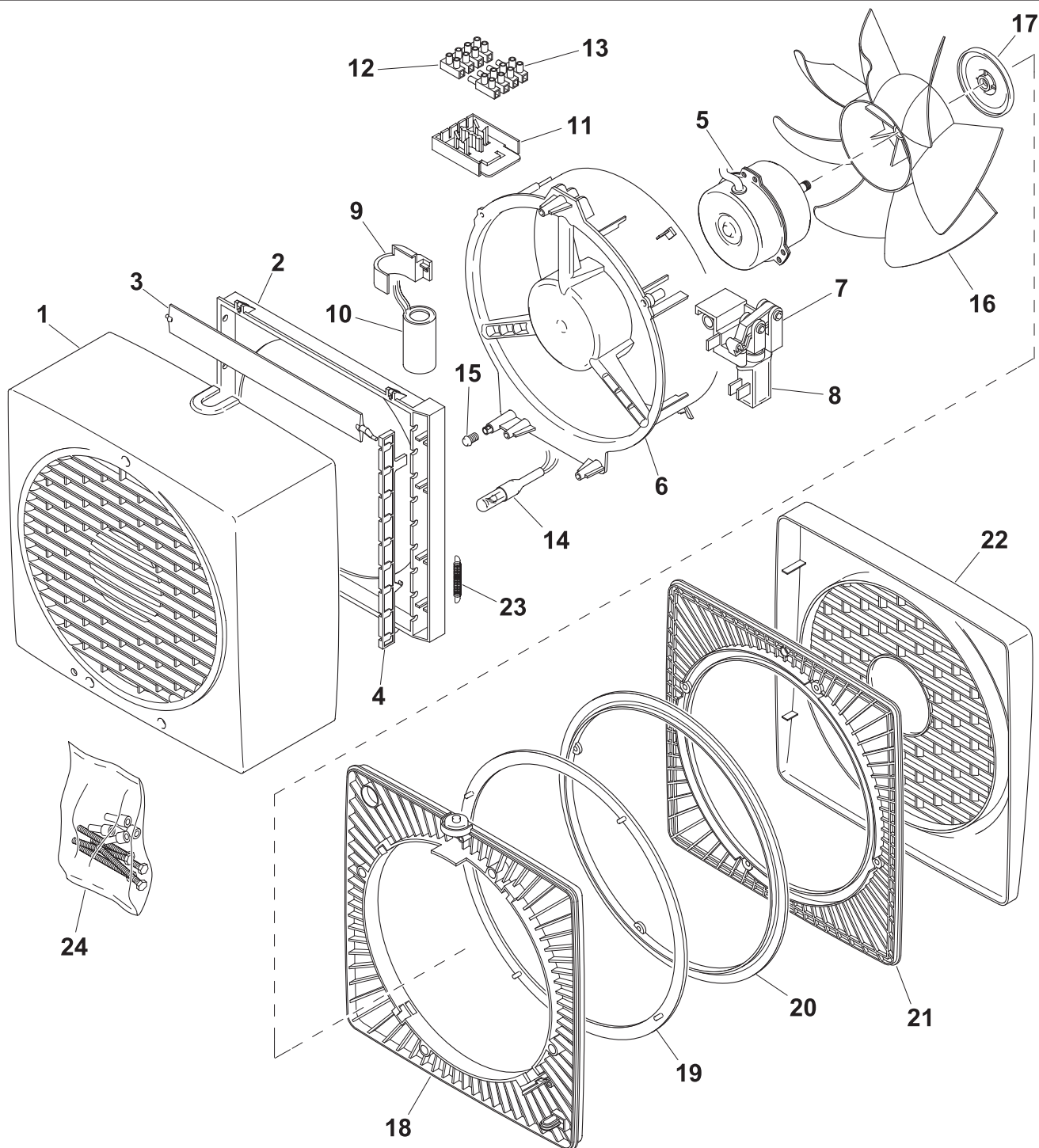


# VORTICE 150/6" AR

REV. 04  
06/11/2013



<b>IT</b>	Cod. 12612	220 - 240 V ~ 50/60 Hz
<b>EN</b>	Cod. 12612	220 - 240 V ~ 50/60 Hz
<b>FR</b>	Cod. 12612	220 - 240 V ~ 50/60 Hz
<b>DE</b>	Cod. 12612	220 - 240 V ~ 50/60 Hz



**VORTICE ELETTROSOCIALI S.p.A.**  
Strada Cerca, 2 - frazione di Zoate  
20067 TRIBIANO (MI)  
Tel. (+39) 02-90.69.91  
Fax (+39) 02-90.64.625  
ITALIA

**VORTICE LIMITED**  
Beeches House - Eastern  
Avenue  
Burton on Trent  
DE13 0BB  
Tel. (+44) 1283-492949  
Fax (+44) 1283-544121  
UNITED KINGDOM

**VORTICE FRANCE**  
15-33, Rue Le Corbusier  
Europarc-CS 30007  
94046 CRETEIL CEDEX  
Tél. (+33) 1-55.12.50.00  
Fax (+33) 1-55.12.50.01  
FRANCE

COD. 9994000452

# VORTICE 150/6'' AR

REV. 04  
06/11/2013



<b>IT</b>	Cod. 12612	220 - 240 V ~ 50/60 Hz
<b>EN</b>	Cod. 12612	220 - 240 V ~ 50/60 Hz
<b>FR</b>	Cod. 12612	220 - 240 V ~ 50/60 Hz
<b>DE</b>	Cod. 12612	220 - 240 V ~ 50/60 Hz

Ref.	Cod.	Descrizione	Description	Description	Beschreibung
1	1.235.001.052	Griglia interna	Internal grid	Grille intérieure	Innengitter
2	1.139.126.001	Telaio alette	Frame	Châssis	Rahmen
3	1.010.126.008	Alette	Fin	Ailette	Feder
4	1.304.124.009	Asta alette	Rod for tab	Tige pour ailette	Stange für Flügel
5	1.512.000.059	Motore	Motor	Moteur	Motor
6	1.529.001.042	Portamotore	Motor support	Porte-moteur	Motorhalterung
7	1.247.000.123	Gruppo termoattuatore (+8)	Group thermoactuator(+8)	Groupe thermoactionneur(+8)	Einheit thermoschaltglied(+8)
8	5.247.000.127	Termoattuatore	Thermoactuator	Thermoactionneur	Thermoschaltglied
9	1.653.126.023	Portacondensatore	Support Capacitor	Support condensateur	Träger Kondensator
10	5.157.000.144	Condensatore unip.0,6UF 450V	Capacitor UNIP-0,6UF 450V	Condensateur UNIP0,6UF 450V	Kondensator UNIP0,6UF 450V
11	1.653.126.022	Portamorsettiera	Terminal board housing	Porte-bornier	Klemmleistensockel
12	5.310.111.086	Morsettiera femmina	Terminal board	Barrette	Klemmleiste
13	5.310.111.087	Morsettiera maschio	Terminal board	Barrette	Klemmleiste
14	5.283.000.029	Lampada spia	Pilot light	Lampe-témoin	Kontrolleuchte
15	5.304.000.033	Gemma per lampada spia	Indicator light	Lampe-témoin	Glas für Kontrolleuchte
16	1.211.132.001	Girante	Impeller	Turbine	Läufer
17	1.664.132.002	Tappo girante	Cap	Bouchon	Stopfen
18	1.196.126.036	Flangia portamotore	Motor support flange	Bride porte-moteur	Flansch Motorträger
19	1.229.043.005	Guarnizione flange	Gasket	Garniture	Dichtung
20	1.229.043.004	Guarnizione retine	Gasket	Garniture	Dichtung
21	1.196.126.025	Flangia retina	Grid flange	Bride pour grille	Flansch für Gitter
22	1.583.001.026	Retina esterna	Grid	Grille	Gitter
23	5.700.011.022	Molla 0,40	Spring 0,40	Ressort 0,40	Feder 0,40
24	2.644.000.101	Sacchetto accessori	Accessories bag	Sachet accessoires	Beutel
2+3+ 4+23	1.139.000.001	Telaio alette completo	End frame	Châssis complet	Rahmen komplett

**VORTICE ELETTROSOCIALI S.p.A.**  
Strada Cerca, 2 - frazione di Zoate  
20067 TRIBIANO (MI)  
Tel. (+39) 02-90.69.91  
Fax (+39) 02-90.64.625  
ITALIA

**VORTICE LIMITED**  
Beeches House - Eastern  
Avenue  
Burton on Trent  
DE13 0BB  
Tel. (+44) 1283-492949  
Fax (+44) 1283-544121  
UNITED KINGDOM

**VORTICE FRANCE**  
15-33, Rue Le Corbusier  
Europarc-CS 30007  
94046 CRETEIL CEDEX  
Tél. (+33) 1-55.12.50.00  
Fax (+33) 1-55.12.50.01  
FRANCE

COD. 9994000452