

TORRETTE TR E



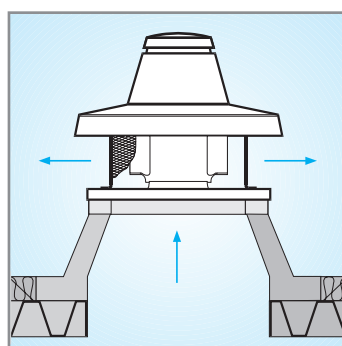
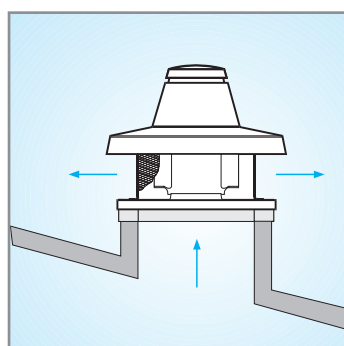
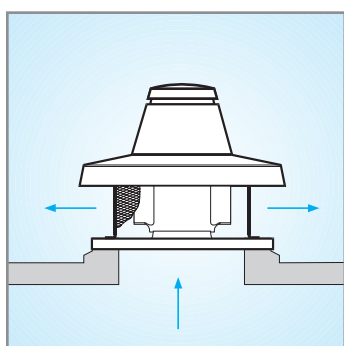
HORIZONTAL DISCHARGE ROOF FANS

Range and product specifications

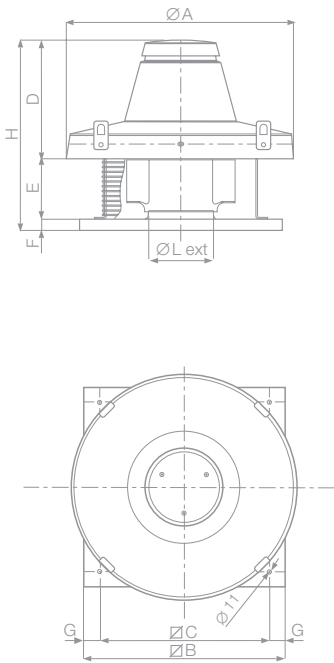
- 20 MODELS
- Delivery up to 18.000 m³/h
- Asynchronous induction motor with protection rating IP55, standard size UNELMEC B5, self-ventilated, with rotor mounted on ball bearings.
- Galvanised steel sheet fan with self cleaning, backward curved blades, self-ventilating, die cast aluminium hub, clockwise rotation (intake view).
- Metal frame coated in corrosion-proof epoxy resin to assure long life and weather resistance.
- Aerodynamic suction nozzle in polyester painted steel sheet.
- All models fitted with steel bird guard.
- Single phase models can be controlled by an optional speed controller. Three phase models have two speeds which can be selected with an optional speed switch. Alternatively they can be controlled by means of optional inverters.

KEY FEATURES

- For installation in commercial and industrial environments, discos, offices, theatres, apartment buildings, gyms, restaurants, etc.
- To assure product safety over time, all models are fitted with a safety cable to anchor the machine to the support base.
- Easy to install on all types of roof.
- Secure using the eyebolt to facilitate lifting and transportation.
- For low dust, acid-free and non-corrosive air extraction only. Not suitable for installation on ducts located directly above fireplaces or burners.



DIMENSIONS



Models	Code	$\varnothing A$	$\varnothing B$	$\varnothing C$	D	E	F	G	H	$\varnothing L$	Kg
TRM 10 E 4P	15115	600	410	357	310	108	38	26.5	456	170	14.5
TRM 15 E 4P	15205	600	410	357	310	108	38	26.5	456	182	15
TRM 20 E 4P	15216	780	550	500	398	128	38	25	564	219	22
TRM 30 E 4P	15356	780	550	500	398	146	38	25	582	244	23
TRM 50 E 4P	15556	780	550	500	398	173	38	25	609	278	28
TRM 70 E 4P	15070	1015	830	750	449	283	38	40	770	328	79
TRT 10 E 4P	15155	600	410	357	310	108	38	26.5	456	170	14.5
TRT 15 E 4P	15255	600	410	357	310	108	38	26.5	456	182	15
TRT 20 E 4P	15215	780	550	500	398	128	38	25	564	219	22
TRT 30 E 4P	15355	780	550	500	398	146	38	25	582	244	23
TRT 50 E 4P	15555	780	550	500	398	173	38	25	609	278	28
TRT 70 E 4P	15071	1015	830	750	449	283	38	40	770	328	77
TRT 70 E 6P	15072	1015	830	750	449	283	38	40	770	365	80
TRT 100 E 4P	15073	1015	830	750	449	283	38	40	770	365	81
TRT 100 E 6P	15074	1165	980	900	605	383	38	40	1026	415	117
TRT 100 E 8P	15075	1165	980	900	605	383	38	40	1026	465	127
TRT 150 E 6P	15076	1165	980	900	605	383	38	40	1026	465	128
TRT 150 E 8P	15077	1165	980	900	605	383	38	40	1026	520	132
TRT 180 E 6P	15078	1165	980	900	605	383	38	40	1026	520	126
TRT 210 E 6P	15079	1165	980	900	605	383	38	40	1026	520	128

TECHNICAL DATA

	Models	Code	V~50 Hz	kW	A	Poles	Delivery		P max		Lp dB(A)*	kg	Insulation	IP	°C*
							m³/h	l/s	mm H ₂ O	Pa					
Single phase	TRM 10 E 4P	15115	230	0,10	0,50	4	1100	306	22	216	56	14,5	d.l	55	90
	TRM 15 E 4P	15205	230	0,15	0,70	4	1400	389	26	255	58.5	15	d.l	55	60
	TRM 20 E 4P	15216	230	0,28	1,30	4	2600	722	36	353	62	22	d.l	55	85
	TRM 30 E 4P	15356	230	0,40	1,80	4	3300	917	44	432	67	23	d.l	55	70
	TRM 50 E 4P	15556	230	0,80	3,70	4	4800	1333	55	540	72.5	28	d.l	55	80
	TRM 70 E 4P	15070	230	1,00	4,35	4	6400	1778	67,5	662	77	79	d.l	55	90
Three phase	TRT 10 E 4P	15155	400	0,10	0,30	4	1100	306	22	216	56	14,5	d.l	55	90
	TRT 15 E 4P	15255	400	0,15	0,30	4	1400	389	26	255	58.5	15	d.l	55	90
	TRT 20 E 4P	15215	400	0,30	0,60	4	2700	750	35	343	62	22	d.l	55	90
	TRT 30 E 4P	15355	400	0,40	0,75	4	3200	889	46	451	67	23	d.l	55	90
	TRT 50 E 4P	15555	400	0,80	1,45	4	4900	1361	61	598	72.5	28	d.l	55	90
	TRT 70 E 4P	15071	400	0,95	1,85	4	6400	1778	69	677	77	77	d.l	55	90
	TRT 70 E 6P	15072	400	0,60	1,30	6	7000	1944	38	373	74	80	d.l	55	90
	TRT 100 E 4P	15073	400	1,90	3,25	4	10000	2778	84,5	829	84	81	d.l	55	40
	TRT 100 E 6P	15074	400	1,10	2,30	6	10800	3000	48	471	77	117	d.l	55	85
	TRT 100 E 8P	15075	400	0,93	2,10	8	11000	3056	34	334	71	127	d.l	55	80
	TRT 150 E 6P	15076	400	1,93	3,45	6	15000	4167	61	598	80	128	d.l	55	55
	TRT 150 E 8P	15077	400	1,60	3,10	8	15000	4167	45	441	74	132	d.l	55	75
TRT 180 E 6P	15078	400	3,10	5,95	6	16000	4444	79	775	83	130	d.l	55	60	
TRT 210 E 6P	15079	400	3,40	6,40	6	18000	5000	79	775	84	132	d.l	55	50	

* Operating temperature from - 25°C to max. temperature in continuous operation.

TORRETTE TR E-V

NEW



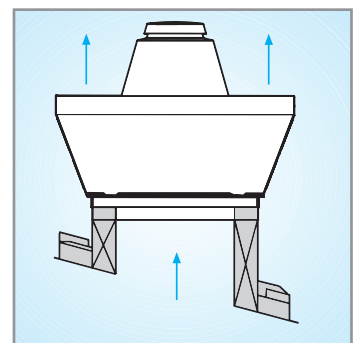
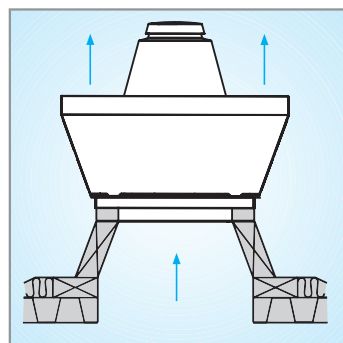
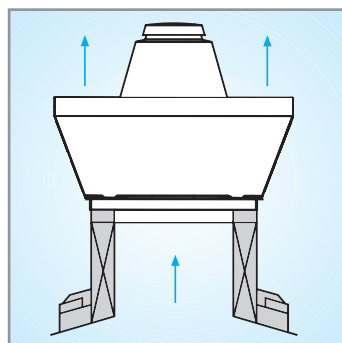
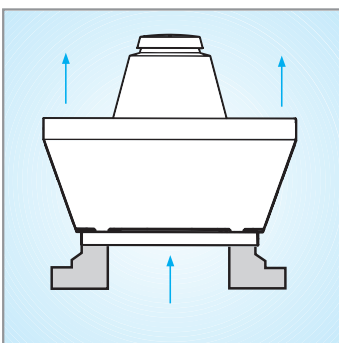
VERTICAL DISCHARGE ROOF FANS

Range and product specifications

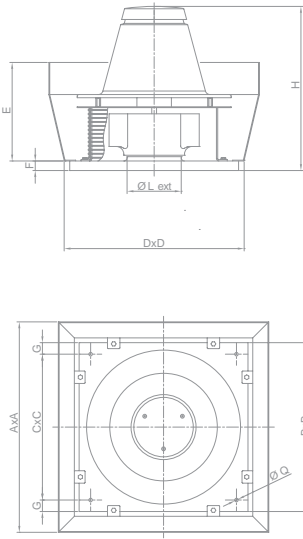
- 20 MODELS
- Delivery up to 18.000 m³/h
- Vertical air extraction with polyester painted, galvanised steel reinforcements.
- Asynchronous induction motor, insulation class F and with protection rating IP55, standard size UNELMEC B5, self-ventilated, with rotor mounted on ball bearings.
- Galvanised steel sheet fan with self cleaning, backward curved blades, self-ventilating, die cast aluminium hub, clockwise rotation (intake view).
- Metal frame coated in corrosion-proof epoxy resin to assure long life and weather resistance.
- All models fitted with steel bird guard.
- Aerodynamic suction nozzle in polyester painted steel sheet.
- Single phase models can be controlled by an optional speed controller. Three phase models have two speeds which can be selected with an optional speed switch. Alternatively they can be controlled by means of optional inverters.

KEY FEATURES

- For installation in commercial and industrial environments, discos, offices, theatres, apartment buildings, gyms, restaurants, etc.
- To assure product safety over time, all models are fitted with a safety cable to anchor the machine to the support base.
- Easy to install on all types of roof.
- Secure using the eyebolt to facilitate lifting and transportation.
- For low dust, acid-free and non-corrosive air extraction only. Not suitable for installation on ducts located directly above fireplaces or burners.



DIMENSIONS



Models	Code	A	B	C	D	E	F	G	H	ØL	ØQ	Kg
TRM 10 E-V 4P	15180	652	410	357	440	328	38	26.5	502	170	11	23
TRM 15 E-V 4P	15182	652	410	357	440	328	38	26.5	502	182	11	24
TRM 20 E-V 4P	15197	907	550	500	580	432	38	25	586	219	11	43
TRM 30 E-V 4P	15198	907	550	500	580	432	38	25	604	244	11	45
TRM 50 E-V 4P	15199	907	550	500	580	432	38	25	631	278	11	51
TRM 70 E-V 4P	15188	1144	830	750	860	491	38	40	723	328	12	105
TRT 10 E-V 4P	15181	652	410	357	440	328	38	26.5	502	170	11	23
TRT 15 E-V 4P	15183	652	410	357	440	328	38	26.5	502	182	11	24
TRT 20 E-V 4P	15184	907	550	500	580	432	38	25	586	219	11	43
TRT 30 E-V 4P	15185	907	550	500	580	432	38	25	604	244	11	45
TRT 50 E-V 4P	15186	907	550	500	580	432	38	25	631	278	11	51
TRT 70 E-V 4P	15187	1144	830	750	860	491	38	40	723	328	12	103
TRT 70 E-V 6P	15189	1144	830	750	860	491	38	40	723	365	12	106
TRT 100 E-V 4P	15190	1144	830	750	860	491	38	40	723	365	12	107
TRT 100 E-V 6P	15191	1462	980	900	1010	595	38	40	903	415	12	161
TRT 100 E-V 8P	15192	1462	980	900	1010	595	38	40	903	465	12	171
TRT 150 E-V 6P	15193	1462	980	900	1010	595	38	40	903	465	12	172
TRT 150 E-V 8P	15194	1462	980	900	1010	595	38	40	903	520	12	176
TRT 180 E-V 6P	15195	1462	980	900	1010	595	38	40	905	520	12	188
TRT 210 E-V 6P	15196	1462	980	900	1010	595	38	40	905	520	12	190

TECHNICAL DATA

	Models	Code	V-50 Hz	kW	A	Poles	Delivery		P max		Lp dB(A)*	kg	Insulation	IP	°C*
							m³/h	l/s	mm H ₂ O	Pa					
Single phase	TRM 10 E-V 4P	15180	230	0,10	0,50	4	1100	306	22	216	56	23	d. I	55	90
	TRM 15 E-V 4P	15182	230	0,15	0,70	4	1400	389	26	255	58.5	24	d. I	55	60
	TRM 20 E-V 4P	15197	230	0,28	1,30	4	2600	722	36	353	62	43	d. I	55	85
	TRM 30 E-V 4P	15198	230	0,40	1,80	4	3300	917	44	432	67	45	d. I	55	70
	TRM 50 E-V 4P	15199	230	0,80	3,70	4	4800	1333	55	540	72.5	51	d. I	55	80
	TRM 70 E-V 4P	15188	230	1,00	4,35	4	6400	1778	67,5	662	77	105	d. I	55	90
Three phase	TRT 10 E-V 4P	15181	400	0,10	0,30	4	1100	306	22	216	56	23	d. I	55	90
	TRT 15 E-V 4P	15183	400	0,15	0,30	4	1400	389	26	255	58.5	24	d. I	55	90
	TRT 20 E-V 4P	15184	400	0,30	0,60	4	2700	750	35	343	62	43	d. I	55	90
	TRT 30 E-V 4P	15185	400	0,40	0,75	4	3200	889	46	451	67	45	d. I	55	90
	TRT 50 E-V 4P	15186	400	0,80	1,45	4	4900	1361	61	598	72.5	51	d. I	55	90
	TRT 70 E-V 4P	15187	400	0,95	1,85	4	6400	1778	69	677	77	103	d. I	55	90
	TRT 70 E-V 6P	15189	400	0,60	1,30	6	7000	1944	38	373	74	106	d. I	55	90
	TRT 100 E-V 4P	15190	400	1,90	3,25	4	10000	2778	84,5	829	84	107	d. I	55	40
	TRT 100 E-V 6P	15191	400	1,10	2,30	6	10800	3000	48	471	77	161	d. I	55	85
	TRT 100 E-V 8P	15192	400	0,93	2,10	8	11000	3056	34	334	71	171	d. I	55	80
	TRT 150 E-V 6P	15193	400	1,93	3,45	6	15000	4167	61	598	80	172	d. I	55	55
	TRT 150 E-V 8P	15194	400	1,60	3,10	8	15000	4167	45	441	74	176	d. I	55	75
TRT 180 E-V 6P	15195	400	3,10	5,95	6	16000	4444	79	775	83	174	d. I	55	60	
TRT 210 E-V 6P	15196	400	3,40	6,40	6	18000	5000	79	775	84	176	d. I	55	50	

* Operating temperature from - 25°C to max. temperature in continuous operation.

TORRETTE TR ED



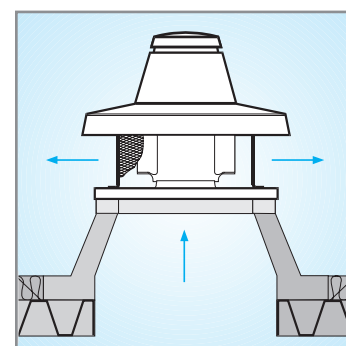
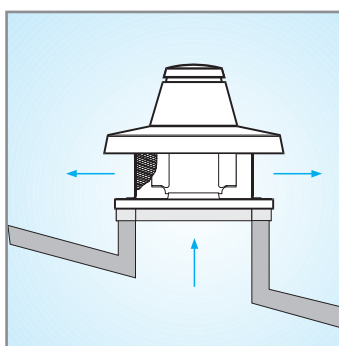
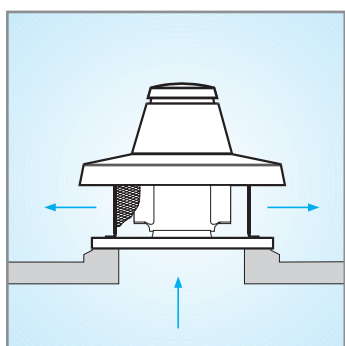
HORIZONTAL DISCHARGE ROOF FANS FOR HOT FUMES EXTRACTION

Range and products specifications:

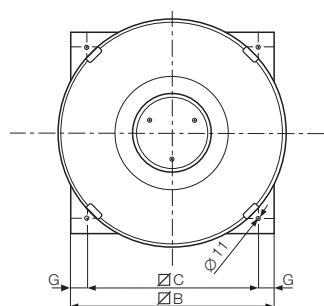
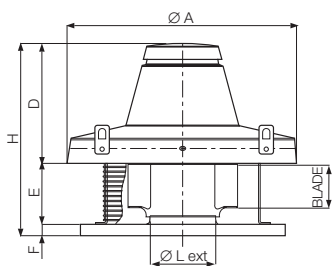
- 20 models
- Delivery: up to 18500 m³/h
- Motors insulation class H; IP55 protection.
- Asynchronous induction motors.
- UNELMEC B5 size, ball bearing mounted shafts.
- Galvanised steel sheet fan with self cleaning, backward curved blades, self-ventilating, die casted aluminium hub, clockwise rotation (intake view).
- All models fitted with steel bird guard.
- Streamlined cross-section intake port, made of polystere sheet steel painted
- For long term safety each unit has a safety cable to anchor it to the base.

KEY FEATURES

- Easy to install on all types of roof. For low dust, acid-free and non-corrosive air extraction only. Not suitable for installation in ducts located directly above fireplaces or burners.
- Engineered for 2 hours continuous extraction of fumes at 400 °C.



DIMENSIONS



Models	Code	Ø A	B	C	D	E	F	G	H	Ø L	Kg
TRM 10 ED 4P	15039	600	410	357	309	166	38	26.5	513	183	18.5
TRM 15 ED 4P	15041	600	410	357	309	166	38	26.5	513	206	19
TRM 20 ED 4P	15043	780	550	500	397	226	38	25	661	231	33
TRM 30 ED 4P	15046	780	550	500	397	226	38	25	661	260	35
TRM 50 ED 4P	15048	780	550	500	397	243	38	25	678	292	40
TRM 70 ED 4P	15080	1015	830	750	449	283	38	40	770	328	80
TRT 10 ED 4P	15040	600	410	357	309	166	38	26.5	513	183	19
TRT 15 ED 4P	15042	600	410	357	309	166	38	26.5	513	206	19
TRT 20 ED 4P	15045	780	550	500	397	226	38	25	661	231	33
TRT 30 ED 4P	15047	780	550	500	397	226	38	25	661	260	35
TRT 50 ED 4P	15049	780	550	500	397	243	38	25	678	292	40
TRT 70 ED 4P	15081	1015	830	750	449	283	38	40	770	328	78
TRT 70 ED 6P	15082	1015	830	750	449	283	38	40	770	365	81
TRT 100 ED 4P	15083	1015	830	750	449	283	38	40	770	365	81.5
TRT 100 ED 6P	15084	1165	980	900	605	383	38	40	1026	415	114
TRT 100 ED 8P	15085	1165	980	900	605	383	38	40	1026	465	124
TRT 150 ED 6P	15086	1165	980	900	605	383	38	40	1026	465	124
TRT 150 ED 8P	15087	1165	980	900	605	383	38	40	1026	520	129
TRT 180 ED 6P	15919	1165	980	900	605	383	38	40	1026	520	127
TRT 210 ED 6P	15920	1165	980	900	605	383	38	40	1026	520	129

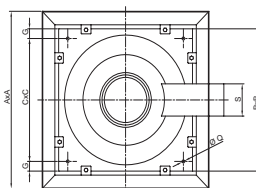
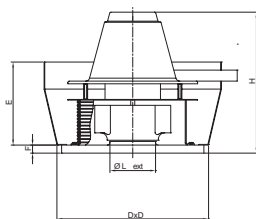
TECHNICAL DATA

Models	Code	V-50 Hz	kW	A	Poles	Delivery		P max		Lp dB(A)*		Insulation	IP	°C*
						m³/h	l/s	mm H ₂ O	Pa	3m	kg			
TRM 10 ED 4P*	15039	220-240	0.10/0.11	0.46/0.46	4	1000	278	20	196	56	18.5	d.l	55	400 °C/2h 90 °C <small>(continuous operation)</small>
TRM 15 ED 4P*	15041	220-240	0.13/0.14	0.60/0.60	4	1400	389	24	235	58.5	19.0	d.l	55	
TRM 20 ED 4P*	15043	220-240	0.26/0.27	1.20/1.20	4	2200	611	34	334	68	33.0	d.l	55	
TRM 30 ED 4P*	15046	220-240	0.40/0.42	1.90/1.90	4	3100	861	40	392	67	35.0	d.l	55	
TRM 50 ED 4P*	15048	220-240	0.70/0.72	3.10/3.30	4	4500	1250	52	510	72.5	40.0	d.l	55	
TRM 70 ED 4P*	15080	220-240	1/1.15	4.70/5.00	4	5800	1611	65	638	77	80.0	d.l	55	
TRT 10 ED 4P*	15040	380-415	0.095/0.1 0.07/0.07	0.23/0.24 0.12/0.12	4	1100/ 890	306/247	21/17	206/167	56	19.0	d.l	55	
TRT 15 ED 4P*	15042	380-415	0.12/0.13 0.08/0.09	0.26/0.26 0.15/0.16	4	1400/ 1100	389/306	24/16	235/157	58.5	19.0	d.l	55	
TRT 20 ED 4P*	15045	380-415	0.26/0.27 0.19/0.21	0.52/0.53 0.32/0.32	4	2200/ 1800	611/500	34/24	334/235	68	33.0	d.l	55	
TRT 30 ED 4P*	15047	380-415	0.40/0.42 0.29/0.30	0.75/0.75 0.47/0.47	4	3100/ 2555	861/710	43/30	422/294	67	35.0	d.l	55	
TRT 50 ED 4P*	15049	380-415	0.67/0.69 0.50/0.53	1.20/1.20 0.80/0.80	4	4500/ 3800	1250/1056	52/38	510/373	72.5	40.0	d.l	55	
TRT 70 ED 4P*	15081	380-415	1.04/1.09 0.82/0.88	2.0/2.0 1.4/1.4	4	6000/ 5300	1667/1472	67/52	657/510	77	78.0	d.l	55	
TRT 70 ED 6P*	15082	380-415	0.58/0.60 0.42/0.45	1.3/1.3 0.85/0.85	6	6000/ 5300	1667/1472	38/30	373/294	74	81.0	d.l	55	
TRT 100 ED 4P*	15083	380-415	1.86/1.95 1.34/1.42	4.2/4.9 2.3/2.3	4	9100/ 8300	2528/2306	84/72	824/706	84	81.5	d.l	55	
TRT 100 ED 6P*	15084	380-415	1.09/1.13 0.82/0.84	2.3/2.4 1.5/1.5	6	8600/ 7550	2389/2097	47/38	461/373	77	114.0	d.l	55	
TRT 100 ED 8P*	15085	380-415	0.82/0.86 0.61/0.61	1.9/2.0 1.2/1.2	8	9200/ 8200	2556/2278	34/28	334/275	71	124.0	d.l	55	
TRT 150 ED 6P*	15086	380-415	1.85/1.93 1.28/1.35	3.5/3.8 2.3/2.4	6	12800/ 11000	3556/3056	59/42	579/412	80	125.0	d.l	55	
TRT 150 ED 8P*	15087	380-415	1.47/1.51 1.00/1.09	3.0/3.0 2.0/2.0	8	13500/ 11600	3750/3222	42/34	412/334	74	129.0	d.l	55	
TRT 180 ED 6P**	15919	400	3.20	6.11	6	16500	4583	79	775	83	220	d.l	55	
TRT 210 ED 6P**	15920	400	3.46	6.42	6	18000	5000	80	785	84	222	d.l	55	

* Certified by TUV according to EN 12101-3

** Certified by LGAI (Applus) according to EN 12101-3

DIMENSIONS



Models	Code	A	B	C	D	E	F	G	H	ØL	ØQ	S	Kg
TRM 10 ED-V 4P	15160	652	410	357	440	328	38	26.5	538	183	11	120	32
TRT 10 ED-V 4P	15161	652	410	357	440	328	38	26.5	538	183	11	120	33
TRM 15 ED-V 4P	15162	652	410	357	440	328	38	26.5	538	206	11	120	33
TRT 15 ED-V 4P	15163	652	410	357	440	328	38	26.5	538	206	11	120	33
TRM 20 ED-V 4P	15164	907	550	500	580	432	38	25	653	231	11	120	61
TRT 20 ED-V 4P	15165	907	550	500	580	432	38	25	653	231	11	120	61
TRM 30 ED-V 4P	15166	907	550	500	580	432	38	25	653	260	11	120	63
TRT 30 ED-V 4P	15167	907	550	500	580	432	38	25	653	260	11	120	63
TRM 50 ED-V 4P	15168	907	550	500	580	432	38	25	669	292	11	120	68
TRT 50 ED-V 4P	15169	907	550	500	580	432	38	25	669	292	11	120	68
TRM 70 ED-V 4P	15170	1144	830	750	860	491	38	40	743	328	12	160	130
TRT 70 ED-V 4P	15171	1144	830	750	860	491	38	40	743	328	12	160	128
TRT 70 ED-V 6P	15172	1144	830	750	860	491	38	40	743	365	12	160	131
TRT 100 ED-V 4P	15173	1144	830	750	860	491	38	40	743	365	12	160	132
TRT 100 ED-V 6P	15174	1462	980	900	1010	595	38	40	923	415	12	160	207
TRT 100 ED-V 8P	15175	1462	980	900	1010	595	38	40	923	465	12	160	217
TRT 150 ED-V 6P	15176	1462	980	900	1010	595	38	40	923	465	12	160	218
TRT 150 ED-V 8P	15177	1462	980	900	1010	595	38	40	923	520	12	160	222
TRT 180 ED-V 6P	15178	1462	980	900	1010	595	38	40	923	520	12	160	220
TRT 210 ED-V 6P	15179	1462	980	900	1010	595	38	40	923	520	12	160	222

TECHNICAL DATA

Models	Code	V-50 Hz	kW	A	Poles	Delivery		P max		Lp dB(A)*	kg	Insulation	IP	°C*
						m³/h	l/s	mm H ₂ O	Pa					
TRM 10 ED-V 4P**	15160	230	0.100	0.45	4	1000	278	20	196	56	32	d.l	55	400 °C/2h
TRM 15 ED-V 4P**	15162	230	0.130	0.57	4	1400	389	24	235	58.5	33	d.l	55	
TRM 20 ED-V 4P**	15164	230	0.250	1.20	4	2200	611	34	334	68	61	d.l	55	
TRM 30 ED-V 4P**	15166	230	0.410	1.75	4	3100	861	40	392	67	63	d.l	55	
TRM 50 ED-V 4P**	15168	230	0.720	3.30	4	4500	1250	52	510	72.5	68	d.l	55	
TRM 70 ED-V 4P**	15170	230	1.000	4.35	4	5800	1611	65	638	77	130	d.l	55	
TRT 10 ED-V 4P**	15161	400	0.100	0.25	4	1100/ 890	306/ 247	21/17	206/167	56	33	d.l	55	
TRT 15 ED-V 4P**	15163	400	0.125	0.27	4	1400/ 1100	389/ 306	24/16	235/157	58.5	33	d.l	55	
TRT 20 ED-V 4P**	15165	400	0.250	0.50	4	2200/ 1800	611/ 500	34/24	334/235	68	61	d.l	55	
TRT 30 ED-V 4P**	15167	400	0.410	0.70	4	3100/ 2550	861/ 500	43/30	422/294	67	63	d.l	55	
TRT 50 ED-V 4P**	15169	400	0.710	1.25	4	4500/ 3800	1250/ 1056	52/38	510/373	72.5	68	d.l	55	
TRT 70 ED-V 4P**	15171	400	1.100	2.00	4	6000/ 5300	1667/ 1472	67/52	657/510	77	128	d.l	55	
TRT 70 ED-V 6P**	15172	400	0.620	1.30	6	6000/ 5300	1667/ 1472	38/30	373/294	74	131	d.l	55	
TRT 100 ED-V 4P**	15173	400	1.870	4.50	4	9100/ 8300	2528/ 2306	84/72	824/706	84	132	d.l	55	
TRT 100 ED-V 6P**	15174	400	1.110	2.30	6	8600/ 7550	2389/ 2097	47/38	461/373	71	207	d.l	55	
TRT 100 ED-V 8P**	15175	400	0.810	2.00	8	9200/ 8200	2556/ 2278	34/28	334/275	71	217	d.l	55	
TRT 150 ED-V 6P**	15176	400	1.880	3.45	6	12800/ 11100	3556/ 3056	59/42	579/412	80	218	d.l	55	
TRT 150 ED-V 8P**	15177	400	1.450	2.95	8	13500/ 11600	3750/ 3222	42/34	412/334	74	222	d.l	55	
TRT 180 ED-V 6P**	15178	400	3.200	6.11	6	16500	4583	79	775	83	220	d.l	55	
TRT 210 ED-V 6P**	15179	400	3.460	6.42	6	18000	5000	80	785	84	222	d.l	55	

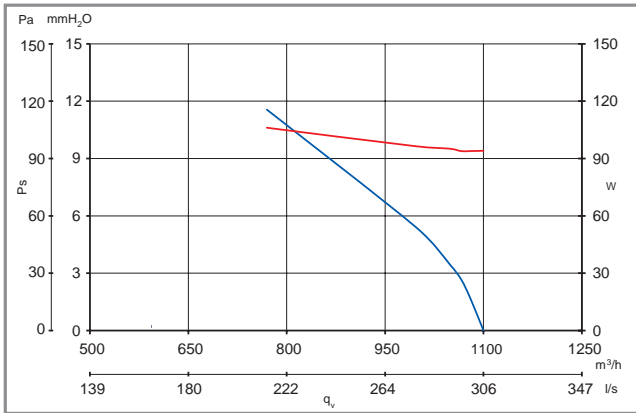
** Certified by LGAI (Applus) according to EN 12101-3

TORRETTE CURVES TR E - TR E-V

— Delivery max — Absorbed Power max
— Delivery min — Absorbed Power min

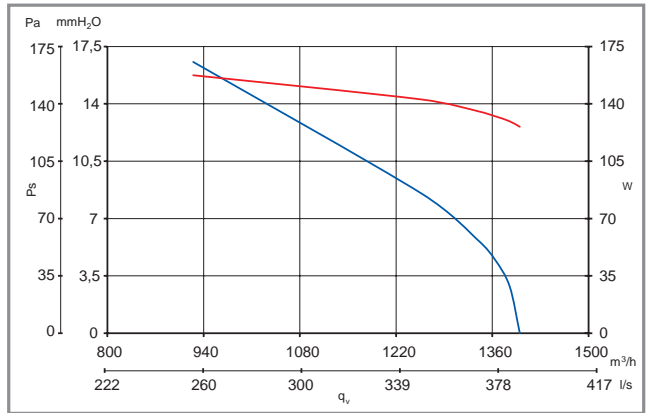
CODE 15115-15180

TRM 10 E-EV 4P



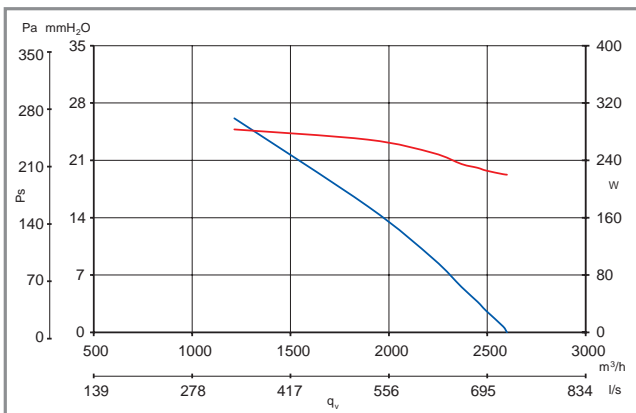
CODE 15205-15182

TRM 15 E-EV 4P



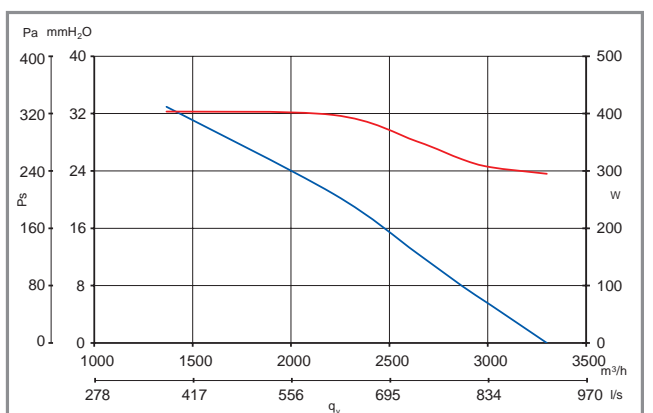
CODE 15216-15197

TRM 20 E-EV 4P



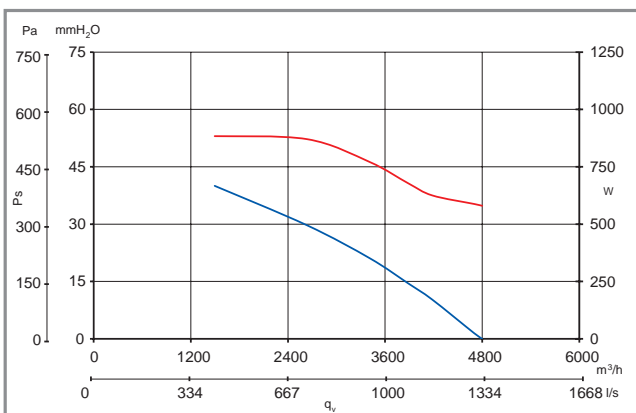
CODE 15356-15198

TRM 30 E-EV 4P



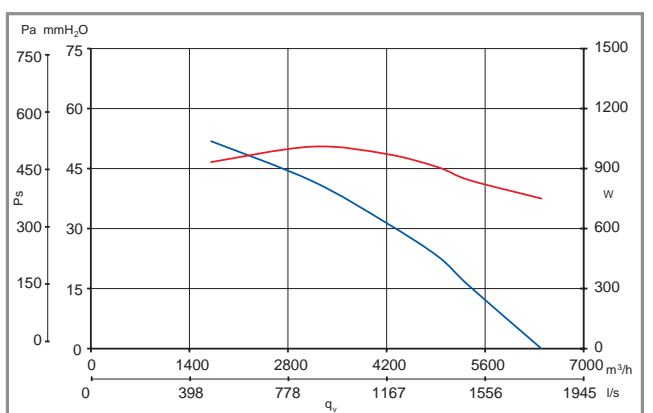
CODE 15556-15199

TRM 50 E-EV 4P



CODE 15070-15188

TRM 70 E-EV 4P

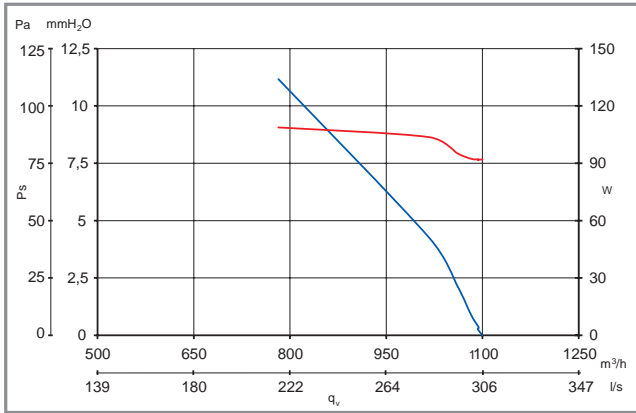


TORRETTE CURVES TR E - TR E -V

— Delivery max
— Delivery min
— Absorbed Power max
— Absorbed Power min

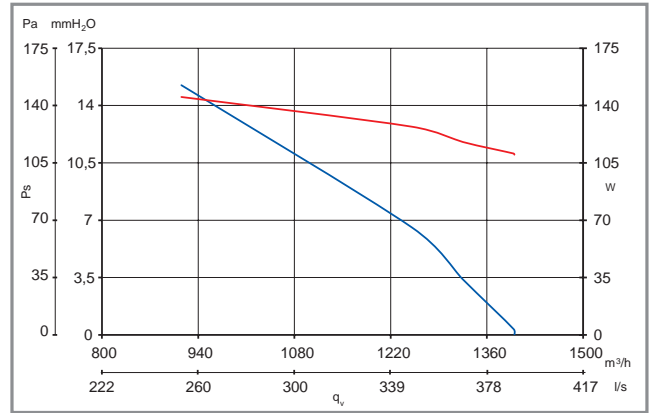
CODE 15155-15181

TRT 10 E-EV 4P



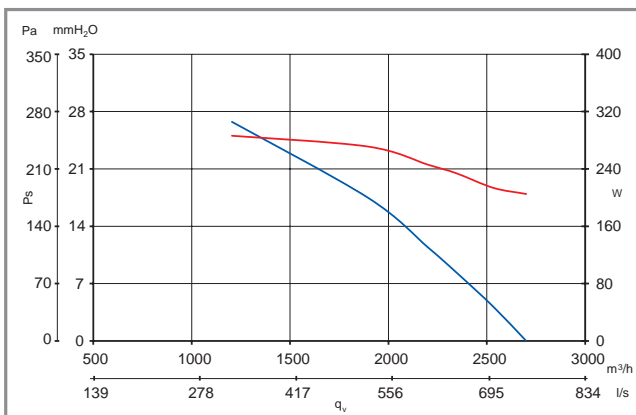
CODE 15255-15183

TRT 15 E-EV 4P



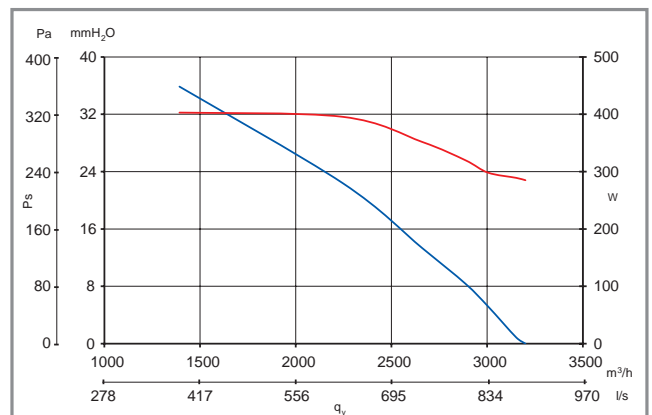
CODE 15215-15184

TRT 20 E-EV 4P



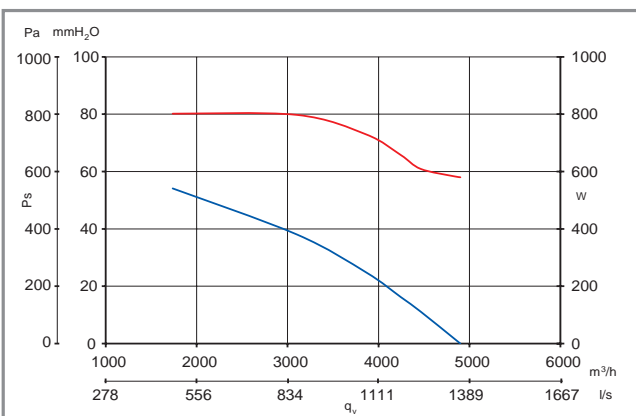
CODE 15355-15185

TRT 30 E-EV 4P



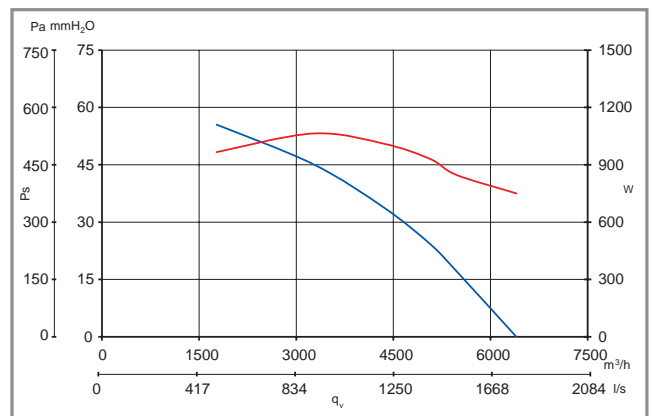
CODE 15555-15186

TRT 50 E-EV 4P



CODE 15071-15187

TRT 70 E-EV 4P

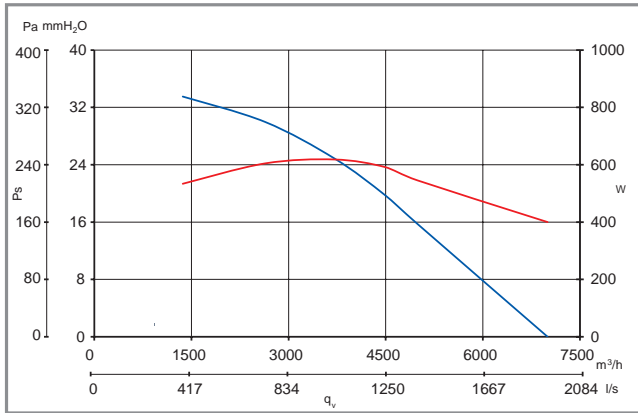


TORRETTE CURVES TR E - TR E -V

— Delivery max — Absorbed Power max
— Delivery min — Absorbed Power min

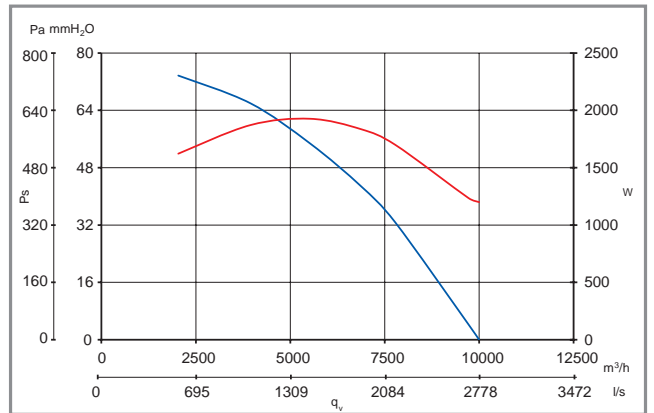
CODE 15072-15189

TRT 70 E-EV 6P



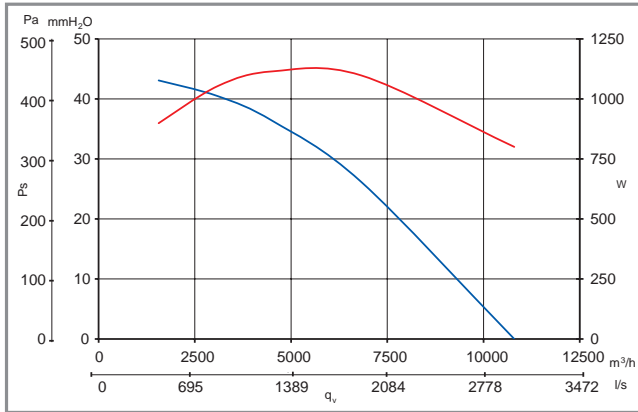
CODE 15073-15190

TRT 100 E-EV 4P



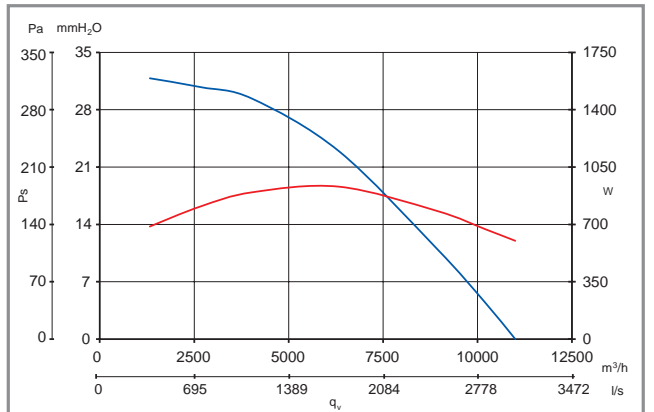
CODE 15074-15191

TRT 100 E-EV 6P



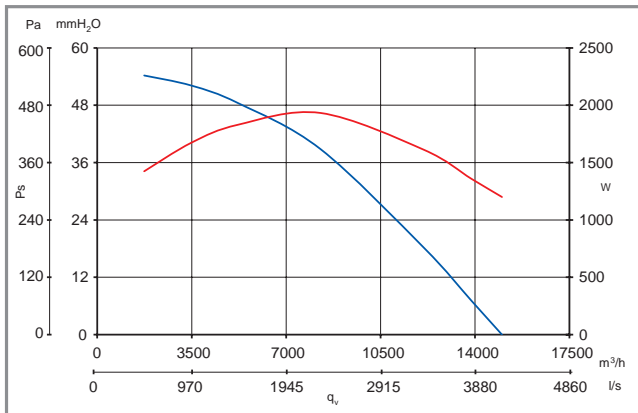
CODE 15075-15192

TRT 100 E-EV 8P



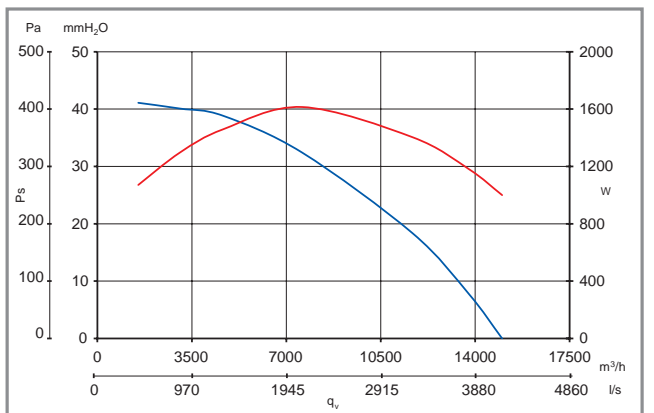
CODE 15076-15193

TRT 150 E-EV 6P



CODE 15077-15194

TRT 150 E-EV 8P

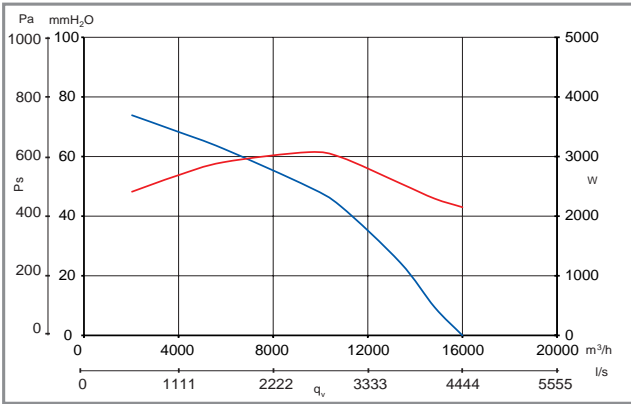


TORRETTE CURVES TR E - TR E -V

— Delivery max
— Absorbed Power max
— Delivery min
— Absorbed Power min

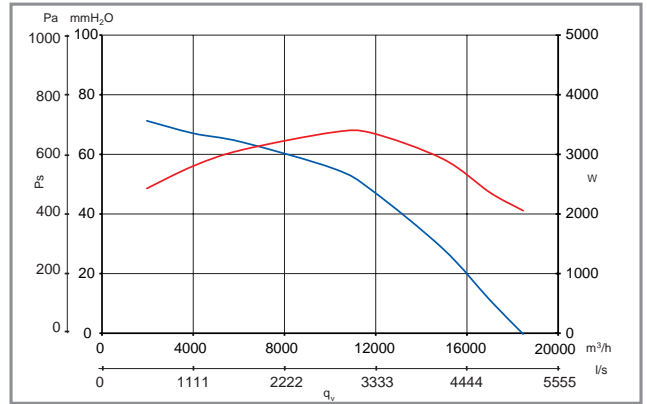
CODE 15078-15195

TRT 180 E-EV 6P



CODE 15079-15196

TRT 210 E-EV 6P

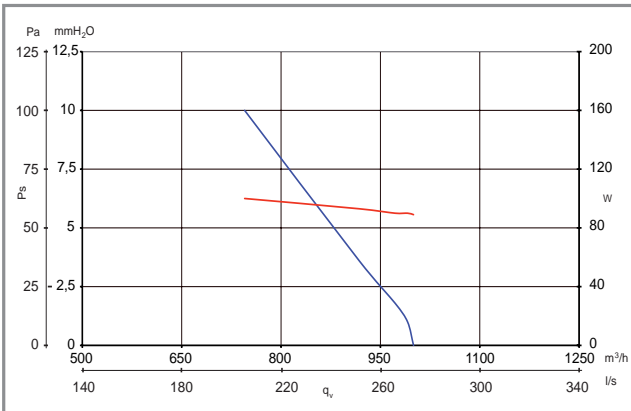


TORRETTE CURVES TR ED

— Delivery
— Absorbed Power
— Delivery min
— Absorbed Power min

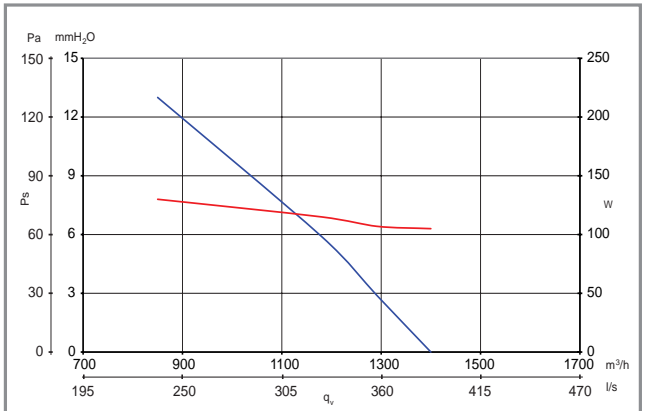
CODE 15039

TRM 10 ED 4P



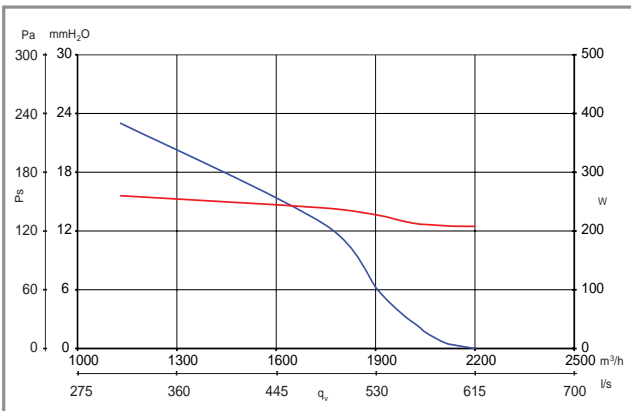
CODE 15041

TRM 15 ED 4P



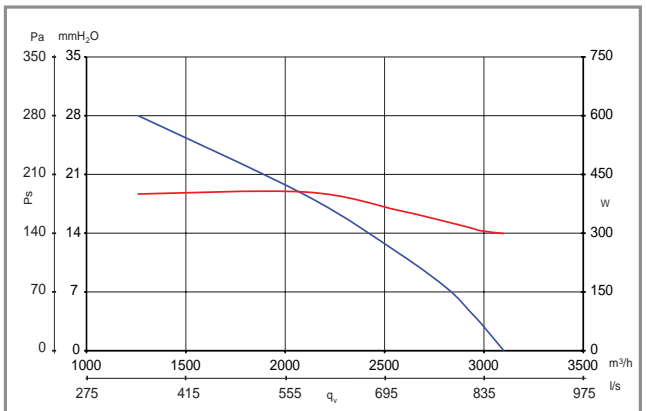
CODE 15043

TRM 20 ED 4P



CODE 15046

TRM 30 ED 4P

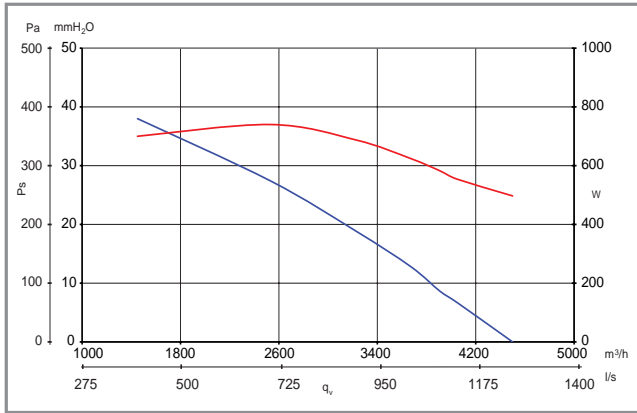


TORRETTE CURVES TR ED

— Delivery max — Absorbed Power max
— Delivery min — Absorbed Power min

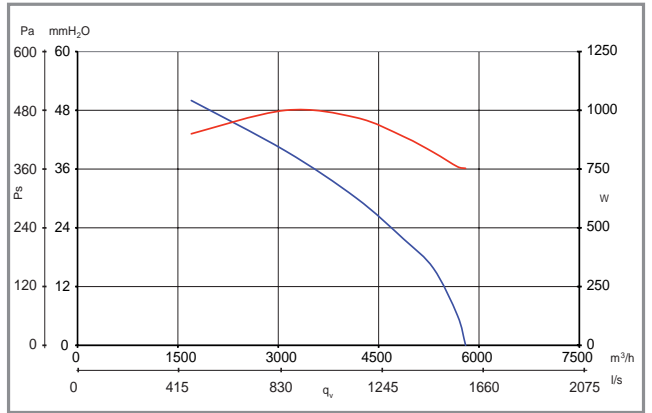
CODE 15048

TRM 50 ED 4P



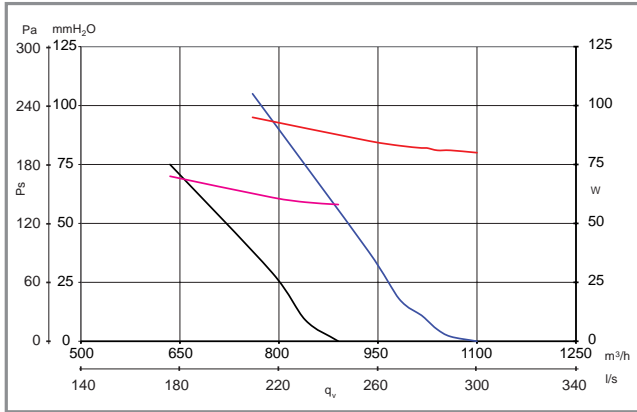
CODE 15080

TRM 70 ED 4P



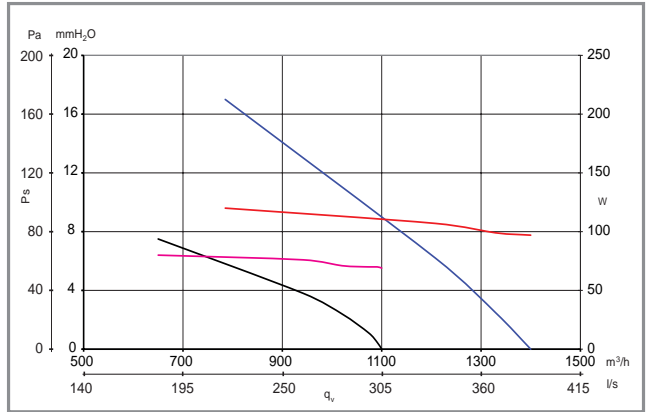
CODE 15040

TRT 10 ED 4P



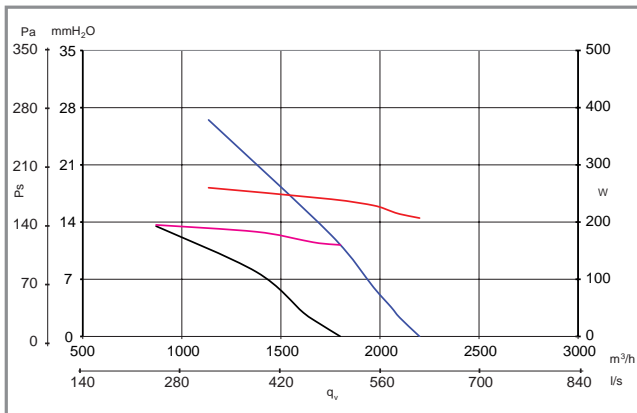
CODE 15042

TRT 15 ED 4P



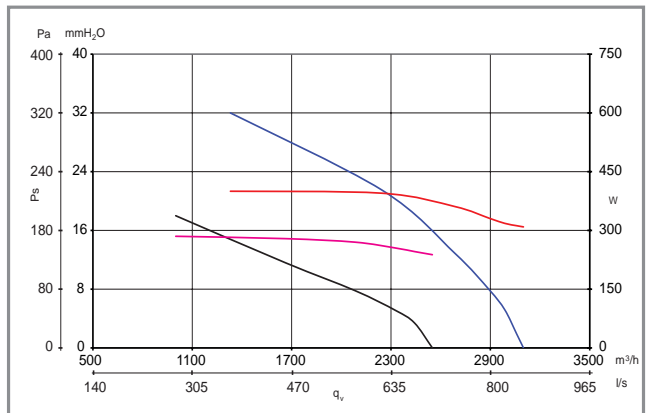
CODE 15045

TRT 20 ED 4P



CODE 15047

TRT 30 ED 4P

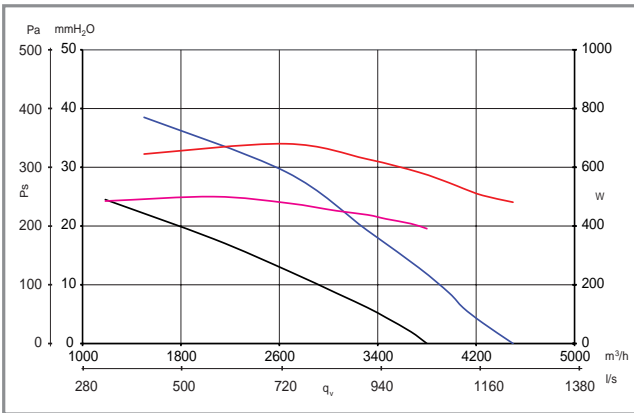


TORRETTE CURVES TR ED

- Delivery max
- Absorbed Power max
- Delivery min
- Absorbed Power min

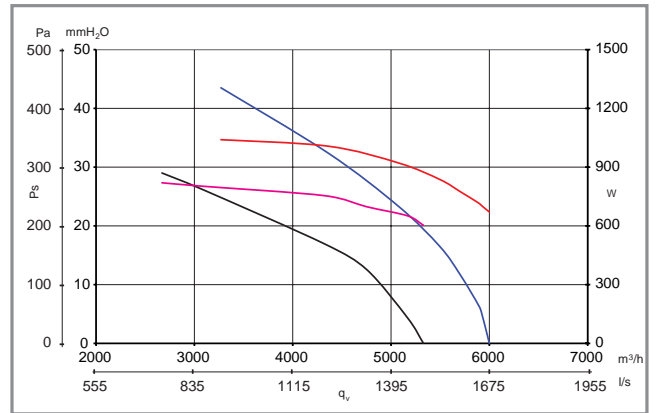
CODE 15049

TRT 50 ED 4P



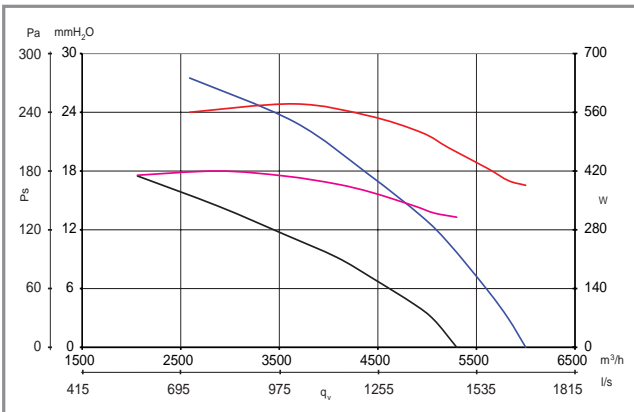
CODE 15081

TRT 70 ED 4P



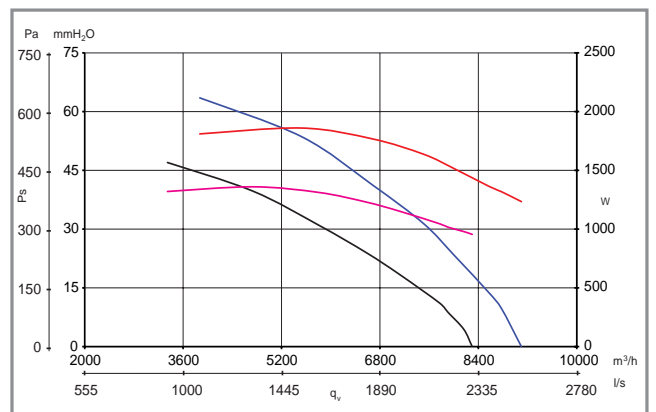
CODE 15082

TRT 70 ED 6P



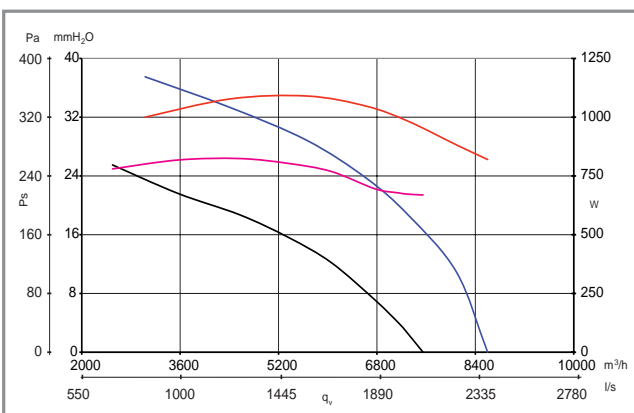
CODE 15083

TRT 100 ED 4P



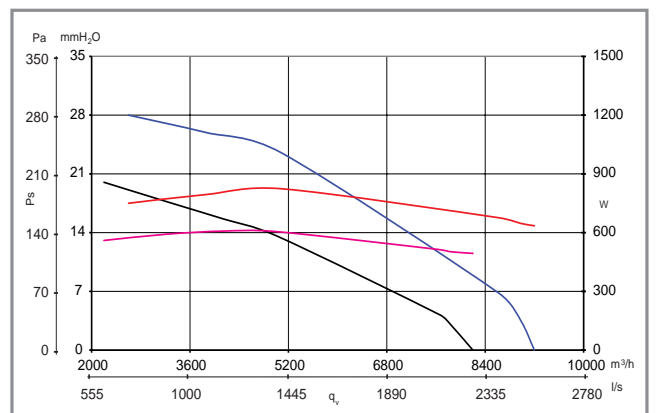
CODE 15084

TRT 100 ED 6P



CODE 15085

TRT 100 ED 8P

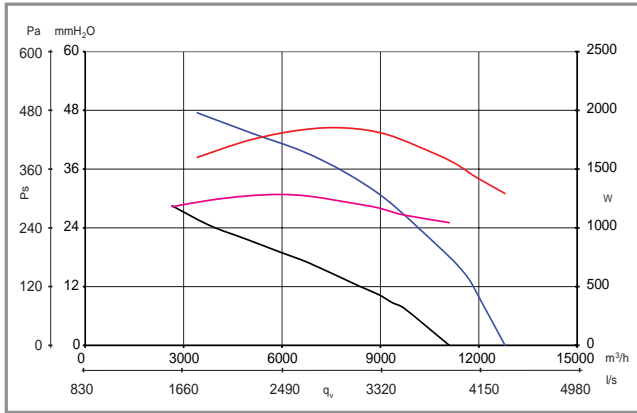


TORRETTE CURVES TR ED

- Delivery max
- Absorbed Power max
- Delivery min
- Absorbed Power min

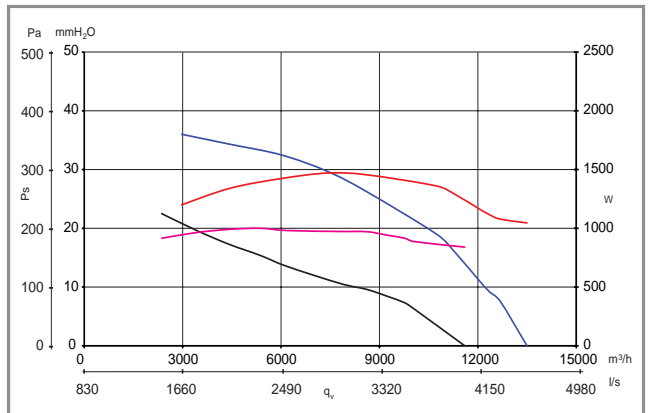
CODE 15086

TRT 150 ED 6P



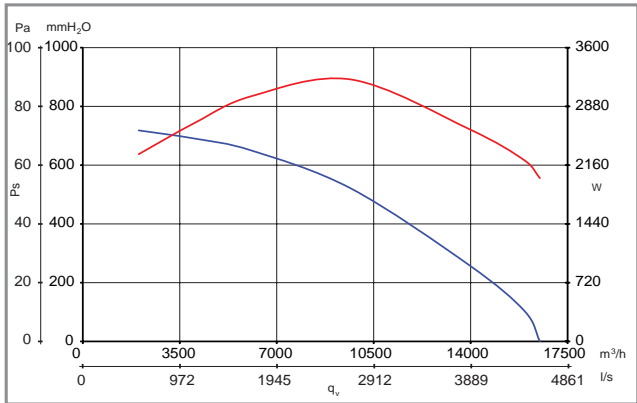
CODE 15087

TRT 150 ED 8P



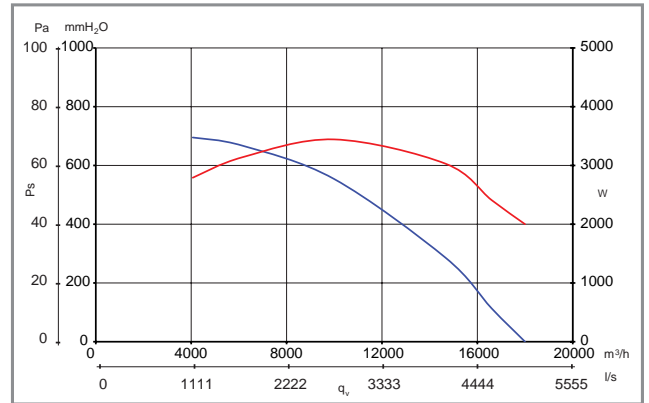
CODE 15919

TRT 180 ED 6P



CODE 15920

TRT 210 ED 6P

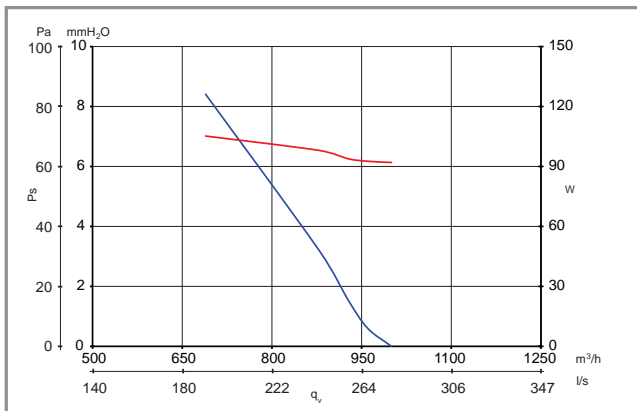


TORRETTE CURVES TR ED - V

- Delivery max
- Absorbed Power max
- Delivery min
- Absorbed Power min

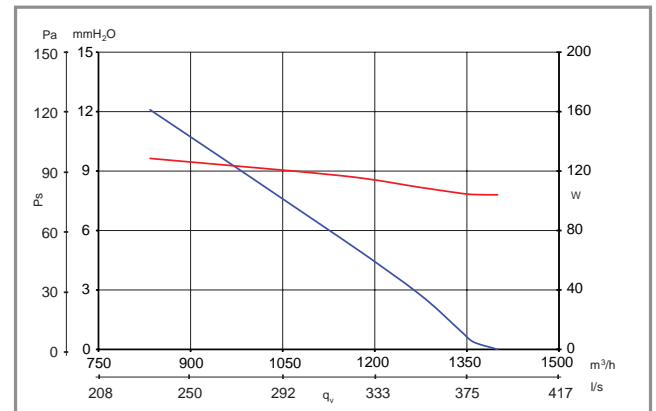
CODE 15160

TRM 10 ED-V 4P



CODE 15162

TRM 15 ED-V 4P

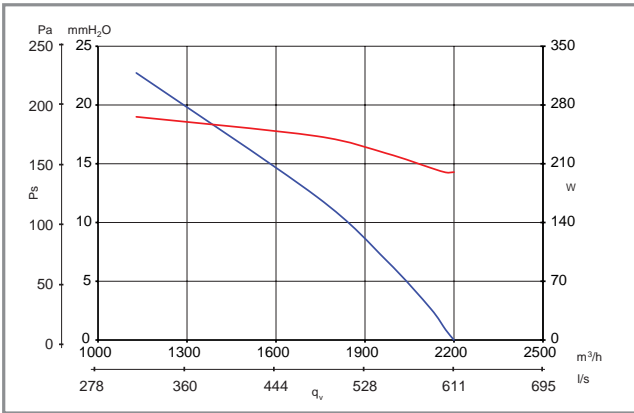


TORRETTE CURVES TR ED - V

- Delivery max
- Absorbed Power max
- Delivery min
- Absorbed Power min

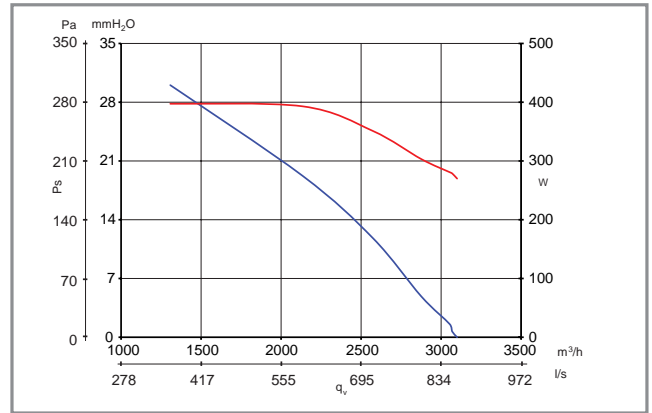
CODE 15164

TRM 20 ED-V 4P



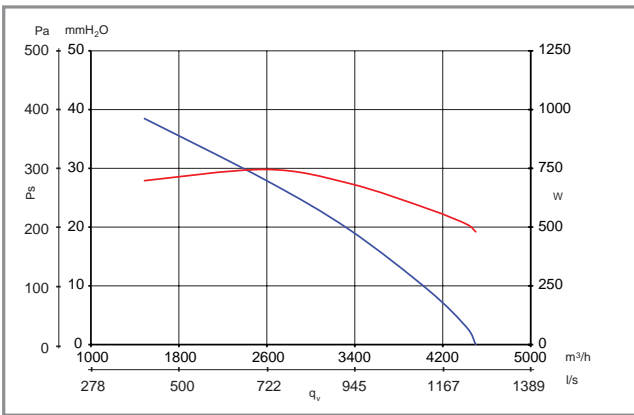
CODE 15166

TRM 30 ED-V 4P



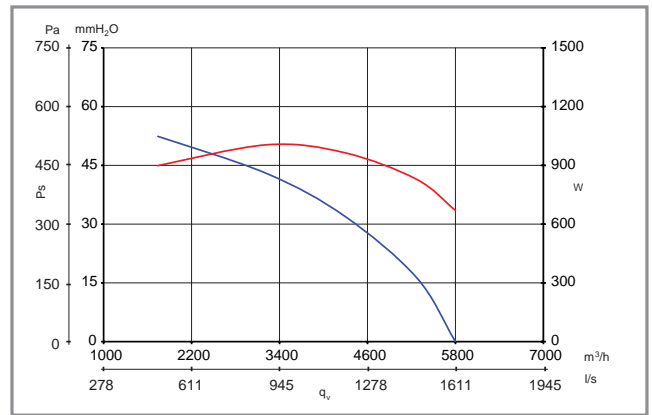
CODE 15168

TRM 50 ED-V 4P



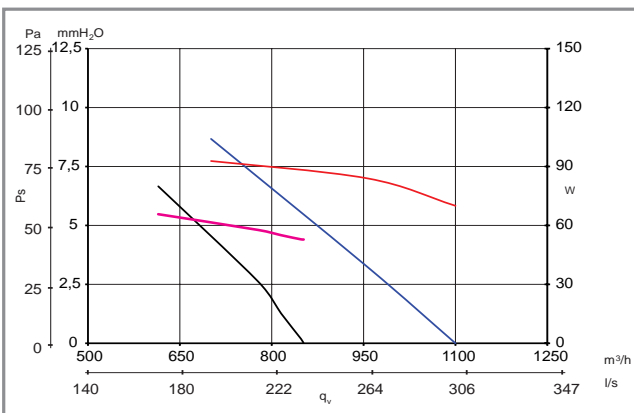
CODE 15170

TRM 70 ED-V 4P



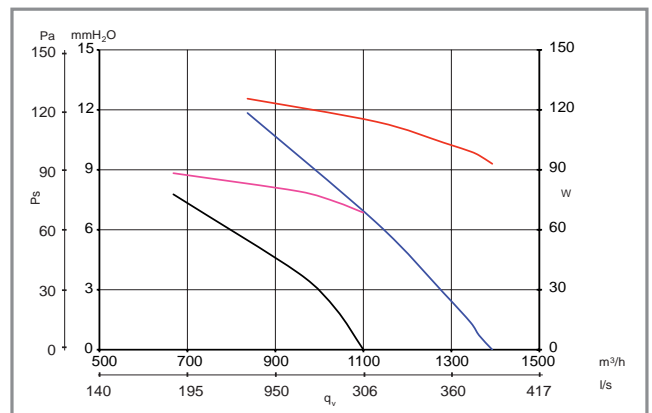
CODE 15161

TRT 10 ED-V 4P



CODE 15163

TRT 15 ED-V 4P

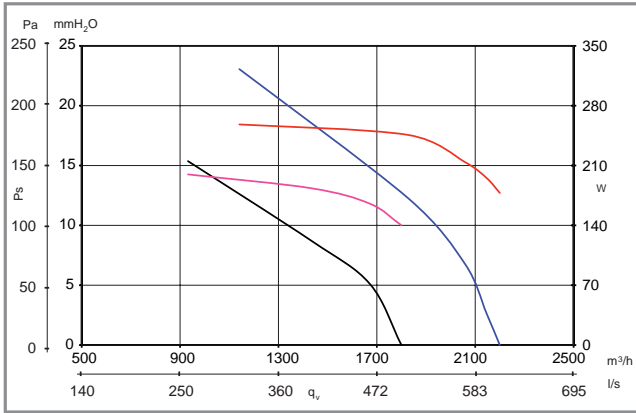


TORRETTE CURVES TR ED - V

- Delivery max
- Absorbed Power max
- Delivery min
- Absorbed Power min

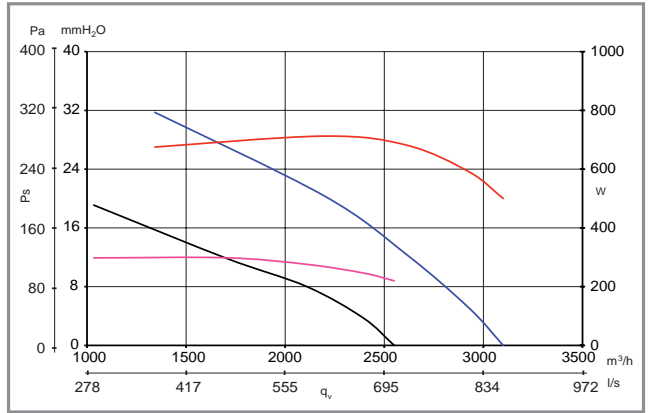
CODE 15165

TRT 20 ED-V 4P



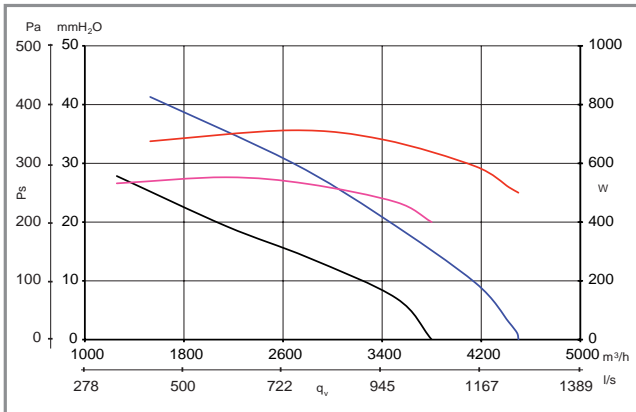
CODE 15167

TRT 30 ED-V 4P



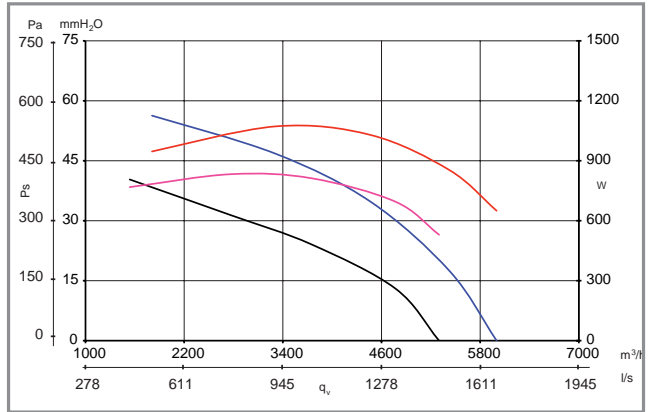
CODE 15169

TRT 50 ED-V 4P



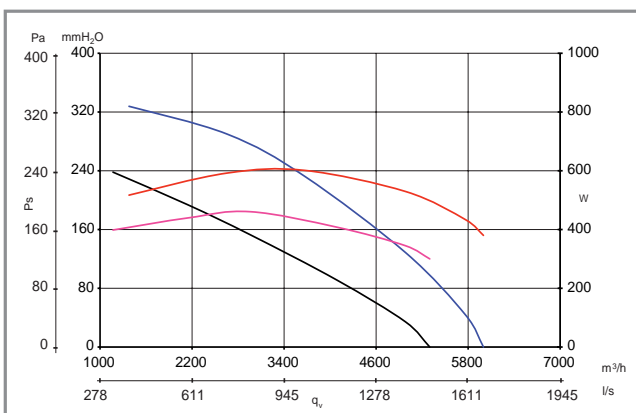
CODE 15171

TRT 70 ED-V 4P



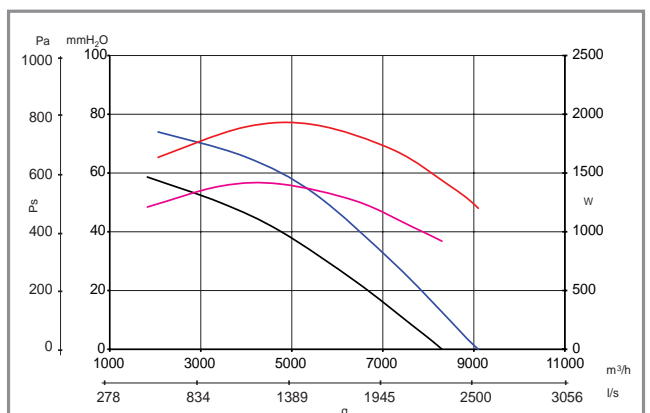
CODE 15172

TRT 70 ED-V 6P



CODE 15173

TRT 100 ED-V 4P

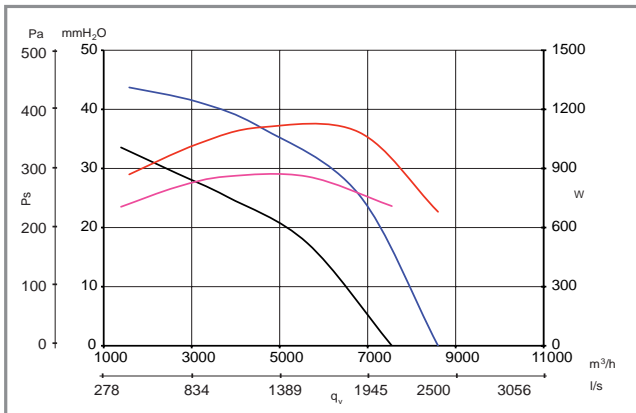


TORRETTE CURVES TR ED - V

- Delivery max
- Absorbed Power max
- Delivery min
- Absorbed Power min

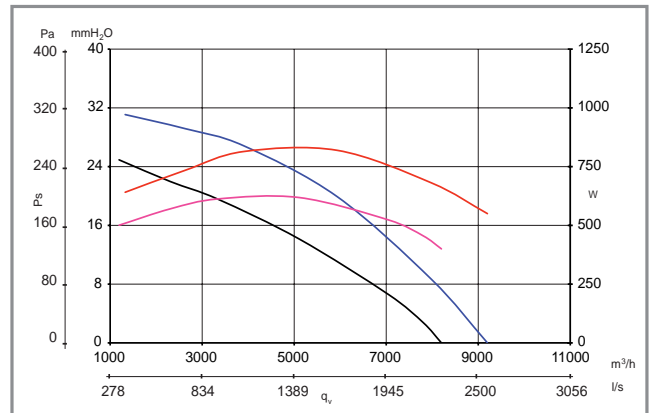
CODE 15174

TRT 100 ED-V 6P



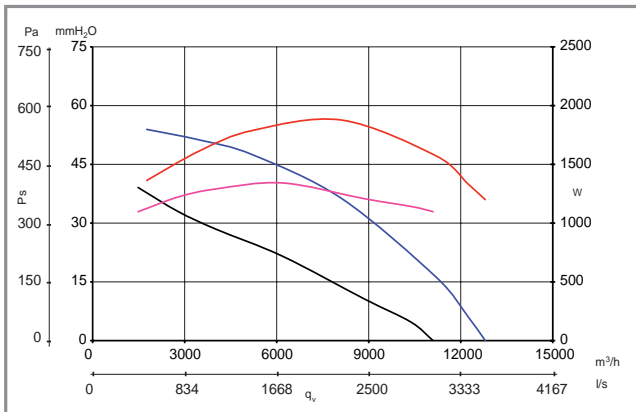
CODE 15175

TRT 100 ED-V 8P



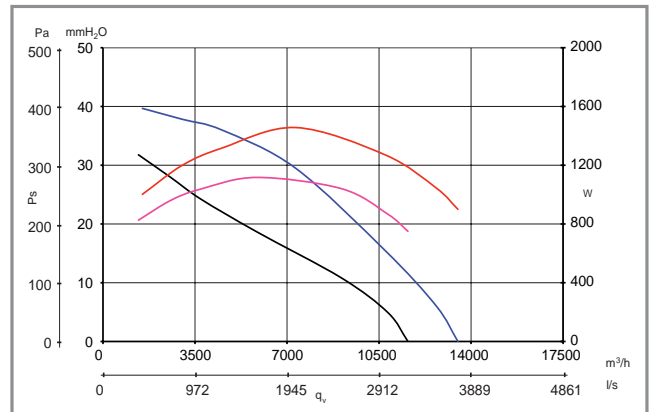
CODE 15176

TRT 150 ED-V 6P



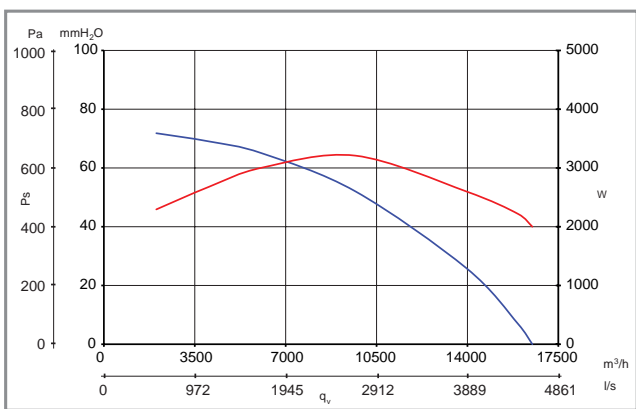
CODE 15177

TRT 150 ED-V 8P



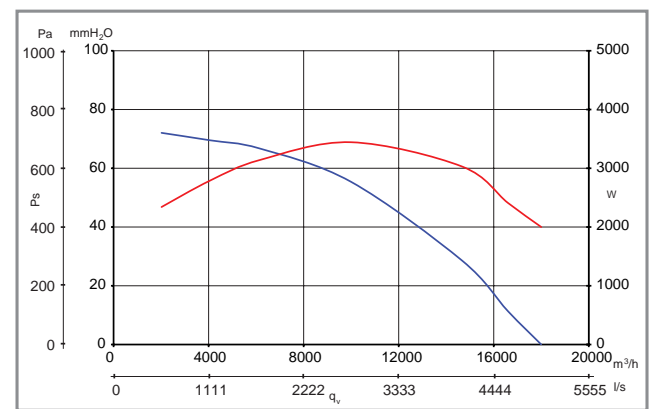
CODE 15178

TRT 180 ED-V 6P

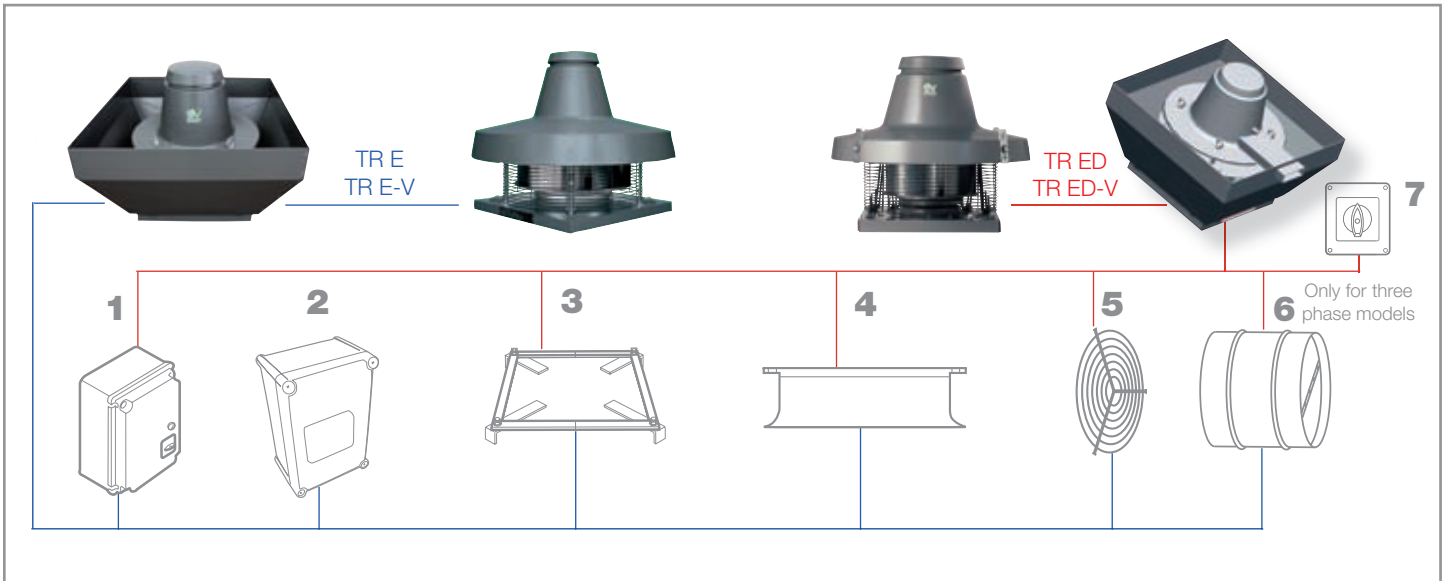


CODE 15179

TRT 210 ED-V 6P



ACCESSORIES TORRETTE TR E, TR E-V, TR ED AND TR ED-V



MODEL	Code
1 SPEED REGULATOR	
IRM 30	12921
IRM 40	12922
IRM 50	12928
IREM 3	12931
IREM 5	12932
IREM 9	12933
IRT 15	12923
IRT 35	12924
IRT 40	12927
IRET 6	12934
2 IREM INVERTER 1.4	12935
IREM INVERTER 4.2	12936
IREM INVERTER 7	12937
IRET INVERTER 1.2	12909
IRET INVERTER 2.2	12925
IRET INVERTER 5	12947
IRET INVERTER 8	12989
3 BASE COUNTERFRAME	
TR-CU 10/15	22511
TR-CU 20/30/50	22512
TR-CU 70/100-4P	22539
TR-CU 100/150/180/180/210 6-8P	22540
4 SUCTION NOZZLE	
TR-B 10/15	22600
TR-B 20/30/50	22610
TR-B 70/100-4P	22508
TR-B 100/150/180/210 6-8P	22509

MODEL	Code
5 PROTECTIVE GRILLE	
TR-G 10/15	22700
TR-G 20/30/50	22710
TR-G 70/100-4P	22506
TR-G 100/150/180/210 6-8P	22507
6 BACKDRAUGHT SHUTTER	
TR-S 10/15	22500
TR-S 20/30/50	22510
TR-S 70/100-4P	22541
TR-S 100/150/180/210 6-8P	22542
7 SPEED CONTROLLER	
TR-CVT	22910

INVERTER SPEED CONTROLLERS

NEW

Suitable for three-phase models



THE ADVANTAGES OF SPEED CONTROLLERS IREM-IRET SERIES INVERTERS

Compared to conventional speed control devices, the VORTICE IREM/IRET series frequency variation controller INVERTERS allows the electric motor to operate within a wider range of values, controlling operation according to the performance required in each situation and avoiding the risk of overheating or harmonic distortions that could condition the mains electricity.

COMBINATION OF TORRETTE AND RELATIVE CONTROLLERS

MODEL				
TRM 10 E 4P TRM 10 E-V 4P	code 15115 code 15180	IRM 30 code 12921	IREM 3 code 12931	-
TRT 10 E 4P TRT 10 E-V 4P	code 15155 code 15181	IRT 15 code 12923	-	IREM INVERTER 1.4 code 12935 IRET INVERTER 1.2 code 12909
TRM 15 E 4P TRM 15 E-V 4P	code 15205 code 15182	IRM 30 code 12921	IREM 3 code 12931	-
TRT 15 E 4P TRT 15 E-V 4P	code 15255 code 15183	IRT 15 code 12923	-	IREM INVERTER 1.4 code 12935 IRET INVERTER 1.2 code 12909
TRM 20 E 4P TRM 20 E-V 4P	code 15216 code 15197	IRM 40 code 12922	IREM 3 code 12931	-
TRT 20 E 4P TRT 20 E-V 4P	code 15215 code 15184	IRT 15 code 12923	-	IREM INVERTER 1.4 code 12935 IRET INVERTER 1.2 code 12909
TRM 30 E 4P TRM 30 E-V 4P	code 15356 code 15198	IRM 40 code 12922	IREM 3 code 12931	-
TRT 30 E 4P TRT 30 E-V 4P	code 15355 code 15185	IRT 35 code 12924	-	IREM INVERTER 1.4 code 12935 IRET INVERTER 1.2 code 12909
TRM 50 E 4P TRM 50 E-V 4P	code 15556 code 15199	IRM 50 code 12928	IREM 5 code 12932	-
TRT 50 E 4P TRT 50 E-V 4P	code 15555 code 15186	IRT 35 code 12924	-	IREM INVERTER 4.2 code 12936 IRET INVERTER 2.2 code 12925
TRM 70 E 4P TRM 70 E-V 4P	code 15070 code 15188	-	IREM 5 code 12932	-
TRT 70 E 4P TRT 70 E-V 4P	code 15071 code 15187	IRT 40 code 12927	IRET 6 code 12934	IREM INVERTER 4.2 code 12936 IRET INVERTER 2.2 code 12925
TRT 70 E 6P TRT 70 E-V 6P	code 15072 code 15189	IRT 35 code 12924	IRET 6 code 12934	IREM INVERTER 4.2 code 12936 IRET INVERTER 2.2 code 12925
TRT 100 E 4P TRT 100 E-V 4P	code 15073 code 15190	-	-	IREM INVERTER 7 code 12937 IRET INVERTER 5 code 12947
TRT 100 E 6P TRT 100 E-V 6P	code 15074 code 15191	IRT 40 code 12927	IRET 6 code 12934	IREM INVERTER 4.2 code 12936 IRET INVERTER 2.2 code 12925
TRT 100 E 8P TRT 100 E-V 8P	code 15075 code 15192	IRT 35 code 12924	IRET 6 code 12934	IREM INVERTER 4.2 code 12936 IRET INVERTER 2.2 code 12925
TRT 150 E 6P TRT 150 E-V 6P	code 15076 code 15193	-	IRET 6 code 12934	IREM INVERTER 7 code 12937 IRET INVERTER 5 code 12947
TRT 150 E 8P TRT 150 E-V 8P	code 15077 code 15194	-	IRET 6 code 12934	IREM INVERTER 7 code 12937 IRET INVERTER 5 code 12947
TRT 180 E 6P TRT 180 E-V 6P	code 15078 code 15195	-	-	IRET INVERTER 8 code 12989
TRT 210 E 6P TRT 210 E-V 6P	code 15079 code 15196	-	-	IRET INVERTER 8 code 12989