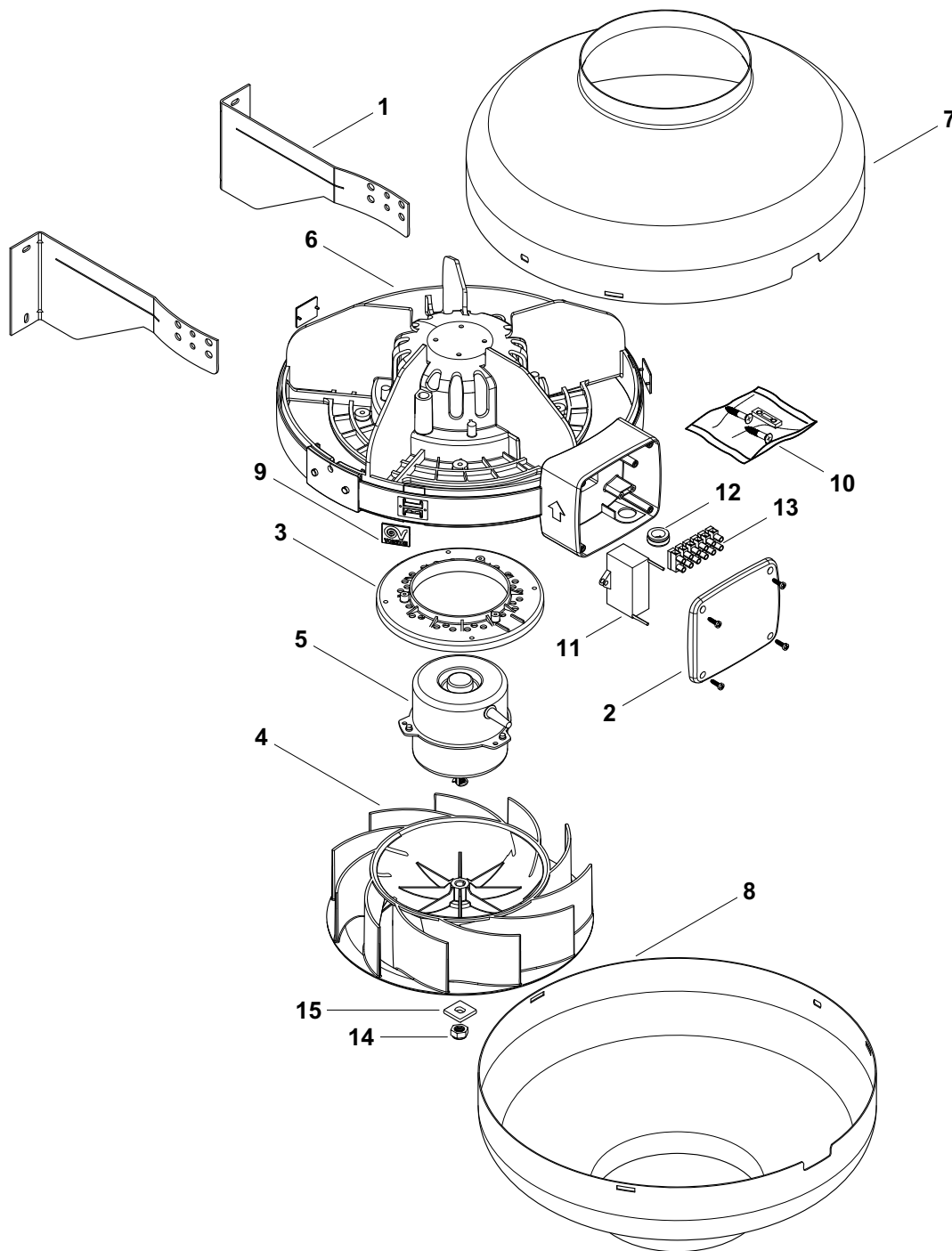


CA 160 MD

REV. 03
18/06/2012

IT	Cod. 16154 - 230 V ~ 50 Hz
EN	Cod. 16154 - 230 V ~ 50 Hz
FR	Cod. 16154 - 230 V ~ 50 Hz
DE	Cod. 16154 - 230 V ~ 50 Hz



VORTICE ELETTROSOCIALI S.p.A.
Strada Cerca, 2 - frazione di Zoate
20067 TRIBIANO (MI)
Tel. (+39) 02-90.69.91
Fax (+39) 02-90.64.625
ITALIA

VORTICE LIMITED
Beeches House - Eastern
Avenue
Burton on Trent
DE13 0BB
Tel. (+44) 1283-492949
Fax (+44) 1283-544121
UNITED KINGDOM

VORTICE FRANCE
15/33 Rue Le Corbusier
Europarc
94046 CRETEIL Cedex
Tel. (+33) 1-55.12.50.00
Fax (+33) 1-55.12.50.01
FRANCE

COD. 9994000561

CA 160 MD

REV. 03
18/06/2012

IT	Cod. 16154 - 230 V ~ 50 Hz
EN	Cod. 16154 - 230 V ~ 50 Hz
FR	Cod. 16154 - 230 V ~ 50 Hz
DE	Cod. 16154 - 230 V ~ 50 Hz



Ref.	Cod.	Descrizione	Description	Description	Beschreibung
1	1.000.000.091	Kit staffe CA 160-315	Bracket installation kit	Étrier de installation	Installation bü'gel
2	1.127.001.153	Coperchio scatola colleg. CA new	Electrical box cover	Boîte électrique couvrir	Elektro-Deckel
3	1.165.132.005	Disco motore Tamere CA 160	Motor adapter ring	Bague adapteur moteur	Motor adapter ring
4	1.205.132.011	Girante CA 200	Impeller	Turbine	Laufgrad
5	1.325.000.473	Motore cusc.Lineo 200/CA WE 160	Motor	Moteur	Motor
6	1.067.000.257	Assieme fascia portamotore CA D.340	Motor holder band	Bande Motor support	Bandmotor halter
7	1.535.191.034	Corpo superiore CA 160	Upper cover	Chapeau haut	Ober deckel
8	1.535.191.034	Corpo inferiore CA 160	Lower cover	Chapeau basse	Unten deckel
9	1.664.132.004	Tappo fascia portamotore CA	Band stopper	Bouchon bande	Stopfen band
10	2.644.000.109	Sacchetto acc. fermacavo	Cable accessories bag	Accessoires câble	Kabel zubehör Beutel
11	5.157.000.228	Condensatore ret. SH 400-450 VAC 5,5UF	Capacitor 5,5 µF 450 V	Condensateur 3,5 µF 450 V	Kondensator
12	5.304.061.019	Passacavo	Cable holder	Porte câble	Kabel halter
13	5.310.111.105	Morsettiera PA27XA1F05P	Terminal blocks	Barrettes de connexion	Klemmleisten
14	5.673.000.133	Dado es.autofr.con anello M8	Hexagon nut M8	Ecrou hexagonal M8	Sechskantmutter M8
15	5.673.201.088	Piastrina di trascinamento x albero d.8	Plate d. 8	Plaquette d. 8	Platte d. 8
*	5.256.084.302	Imballo s. CA 150-160-200-250	Packing	Emballage	Verpackung

VORTICE ELETTROSOCIALI S.p.A.
Strada Cerca, 2 - frazione di Zoate
20067 TRIBIANO (MI)
Tel. (+39) 02-90.69.91
Fax (+39) 02-90.64.625
ITALIA

VORTICE LIMITED
Beeches House - Eastern
Avenue
Burton on Trent
DE13 0BB
Tel. (+44) 1283-492949
Fax (+44) 1283-544121
UNITED KINGDOM

VORTICE FRANCE
15/33 Rue Le Corbusier
Europarc
94046 CRETEIL Cedex
Tel. (+33) 1-55.12.50.00
Fax (+33) 1-55.12.50.01
FRANCE

COD. 9994000561