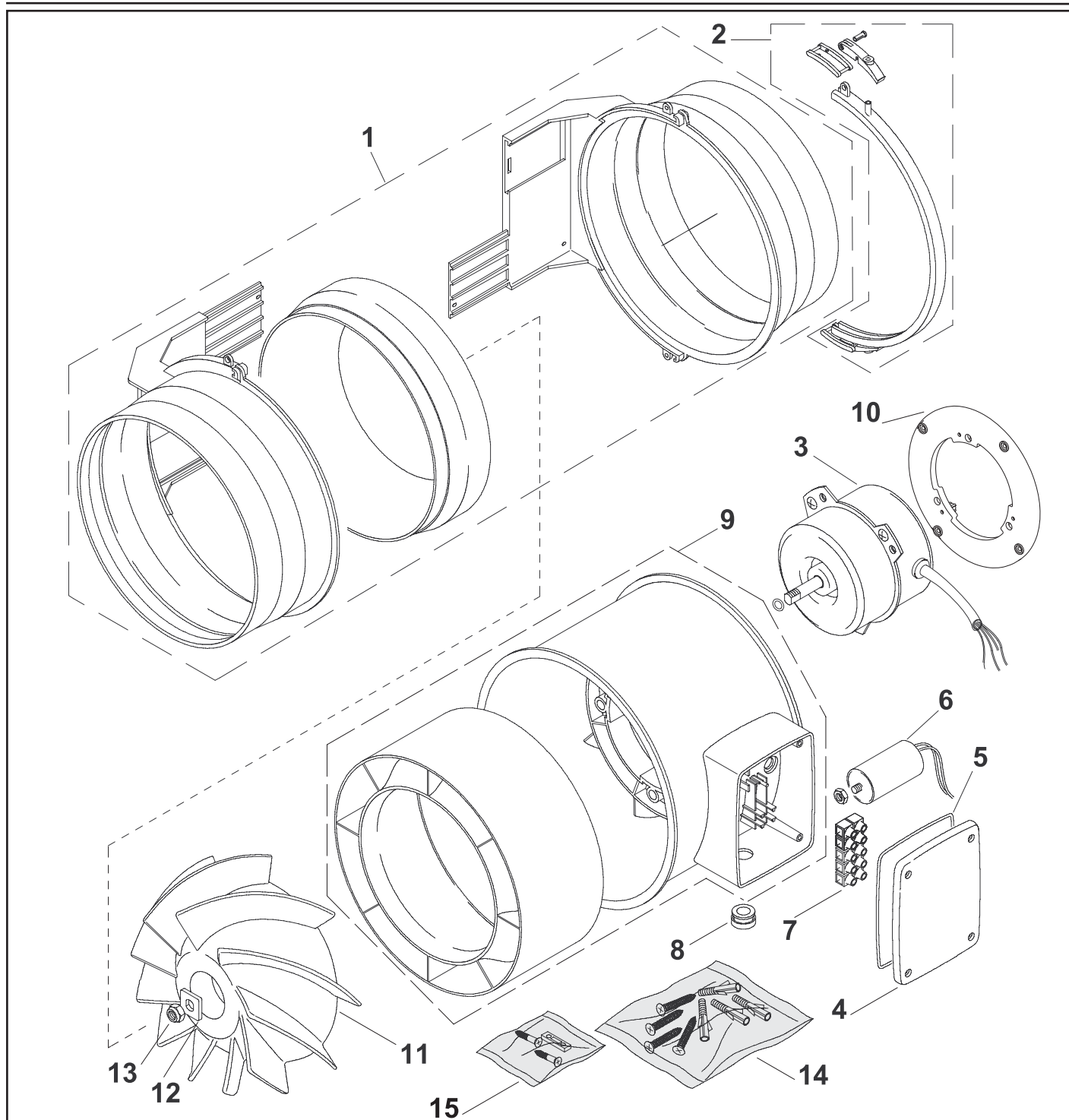


# VORTICE LINEO 250 Q V0

REV. 01  
28/02/2012

IT	Cod. 17.027	220-240 V ~ 50 Hz
EN	Cod. 17.027	220-240 V ~ 50 Hz
FR	Cod. 17.027	220-240 V ~ 50 Hz
DE	Cod. 17.027	220-240 V ~ 50 Hz



**VORTICE ELETTROSOCIALI S.p.A.**  
Strada Cerca, 2 - frazione di Zoate  
20067 TRIBIANO (MI)  
Tel. (+39) 02-90.69.91  
Fax (+39) 02-90.64.625  
ITALIA

**VORTICE LIMITED**  
Beeches House - Eastern  
Avenue  
Burton on Trent  
DE13 0BB  
Tel. (+44) 1283-492949  
Fax (+44) 1283-544121  
UNITED KINGDOM

**VORTICE FRANCE**  
15/33 Rue Le Corbusier  
Europarc  
94046 CRETEIL Cedex  
Tel. (+33) 1-55.12.50.00  
Fax (+33) 1-55.12.50.01  
FRANCE

COD. 9994000835

# VORTICE LINEO 250 Q V0

REV. 01  
289/02/2012

<b>IT</b>	Cod. 17.027	220-240 V ~ 50 Hz
<b>EN</b>	Cod. 17.027	220-240 V ~ 50 Hz
<b>FR</b>	Cod. 17.027	220-240 V ~ 50 Hz
<b>DE</b>	Cod. 17.027	220-240 V ~ 50 Hz



Ref.	Cod.	Descrizione	Description	Description	Beschreibung
1	1.019.000.114	Boccaglio completo	Embout complet	Complete nozzle	Mundstück Komplett
2	1.053.000.006	Cerniera completa	Charnière complet	Complete hinge	Scharnier Komplett
3	1.325.000.388	Motore	Moteur	Motor	Motor
4	1.127.132.033	Coperchio	Couvercle	Lid	Gehäuse
5	2.229.103.006	Guarnizione	Garniture	Gasket	Dichtung
6	5.157.000.206	Condensatore 2,5UF 425V	Condensateur 2,5UF 425V	Capacitor 2,5UF 425V	Kondensator 2,5UF 425V
7	5.310.111.105	Morsettiera PA27XA1F05P	Barrette PA27XA1F05P	Terminal board PA27XA1F05P	Klemmleiste PA27XA1F05P
8	5.304.061.019	Passacavo	Passe-câble	Cable gland	Kabeldurchführung
9	1.010.000.048	Portamotore + cono	Porte-moteur + conveyor	Motor support +conveyor	Motorhalterung+ Leitbleich
10	1.072.132.035	Anello adattatore	Adapter adaptateur	Ring adapter	Ring Adapter
11	1.211.135.008	Girante	Turbine	Impeller	Läufer
12	5.673.201.088	Piastrina trascinamento d.8	Plaque d.8	Plate d.8	Platte d.8
13	5.673.000.133	Dado es.autofr.con anello M8	Ecrou hexagonal M8	Hexag on nut M8	Sechskantmutter M8
14	2.644.000.175	Sacchetto acc.(viti+tasselli)	Sachet accessoires	Accessoires bag	Beutel mit Zubehör
15	2.644.000.109	Sacchetto acc.(fermacavo)	Sachet accessoires	Accessoires bag	Beutel mit Zubehör
*	5.255.084.874	Imballo	Emballage	Packaging	Verpackung

- I disegni dei prodotti e dei loro componenti, potrebbero non rappresentarne la forma originale.  
- The drawings of the products or their components may differ from their actual original shape.  
- Les dessins des produits ou de leur composants peuvent être différents de leur formes originelles.  
- Die Bilder der Produkten oder ihrer Bestandteilen könnten ihrer Originalform nicht entsprechen.

**VORTICE ELETTROSOCIALI S.p.A.**  
Strada Cerca, 2 - frazione di Zoate  
20067 TRIBIANO (MI)  
Tel. (+39) 02-90.69.91  
Fax (+39) 02-90.64.625  
ITALIA

**VORTICE LIMITED**  
Beeches House - Eastern  
Avenue  
Burton on Trent  
DE13 0BB  
Tel. (+44) 1283-492949  
Fax (+44) 1283-544121  
UNITED KINGDOM

**VORTICE FRANCE**  
15/33 Rue Le Corbusier  
Europarc  
94046 CRETEIL Cedex  
Tel. (+33) 1-55.12.50.00  
Fax (+33) 1-55.12.50.01  
FRANCE

COD. 9994000835