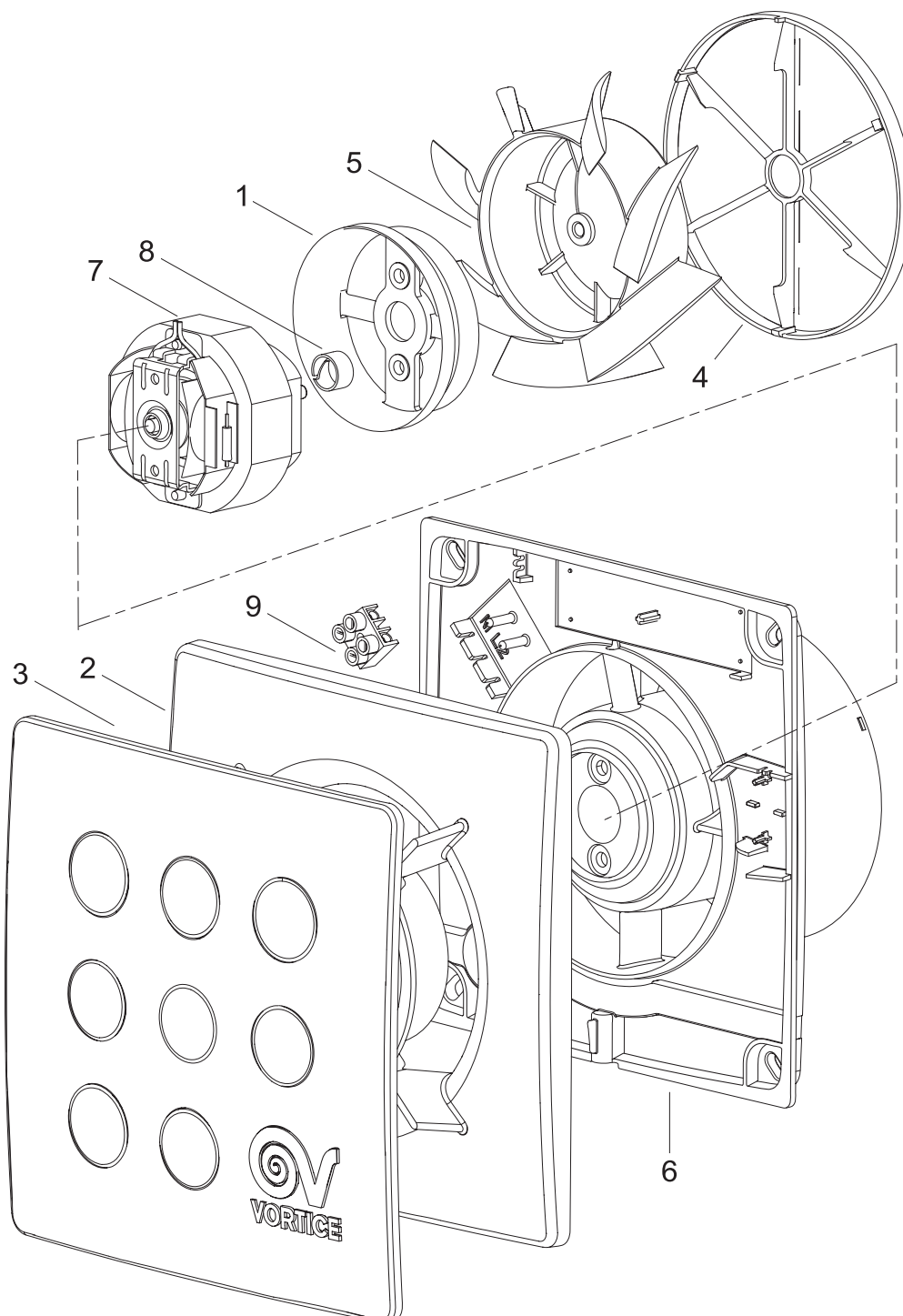


# MFO 100 / 4''

REV. 03  
25/03/2012

<b>IT</b>	Cod. 11145 - 230-240V ~ 50 Hz
<b>EN</b>	Cod. 11145 - 230-240V ~ 50 Hz
<b>FR</b>	Cod. 11145 - 230-240V ~ 50 Hz
<b>DE</b>	Cod. 11145 - 230-240V ~ 50 Hz



**VORTICE ELETTROSOCIALI S.p.A.**  
Strada Cerca, 2 - frazione di Zoate  
20067 TRIBIANO (MI)  
Tel. (+39) 02-90.69.91  
Fax (+39) 02-90.64.625  
ITALIA

**VORTICE LIMITED**  
Beeches House - Eastern  
Avenue  
Burton on Trent  
DE13 0BB  
Tel. (+44) 1283-492949  
Fax (+44) 1283-544121  
UNITED KINGDOM

**VORTICE FRANCE**  
15/33 Rue Le Corbusier  
Europarc - CS 30007  
94046 CRETEIL Cedex  
Tel. (+33) 1-55.12.50.00  
Fax (+33) 1-55.12.50.01  
FRANCE

COD. 9994000484

# MFO 100 / 4''

REV. 03  
25/03/2013

**IT** Cod. 11145 - 230-240V ~ 50 Hz

**EN** Cod. 11145 - 230-240V ~ 50 Hz

**FR** Cod. 11145 - 230-240V ~ 50 Hz

**DE** Cod. 11145 - 230-240V ~ 50 Hz



Ref.	Cod.	Descrizione	Description	Description	Beschreibung
1	1.103.111.002	Coprimotore	Motor cover	Couvercle moteur	Gehäuse
2	1.127.001.127	Coperchio portamotore	Motor holder support	Cache Porte-moteur	Motorträger deckel
3	1.127.191.075	Coperchio piatto	Flat cover	Cache plat	Platt deckel
4	1.174.000.005	Valvola di non ritorno	Check valve	Soupape de retenue	Rückschlagventil MF 90/3.5
5	1.211.132.011	Girante	Impeller	Turbine	Läufer
6	1.259.001.030	Portamotore	Motor support	Porte-moteur	Motorträger
7	1.325.000.476	Motore	Motor	Moteur	Motor
8	5.001.176.060	Anello SCB/2	Ring SCB/2	Bague SCB/2	Ring SCB/2
9	5.310.086.001	Morsettiera PA/35/2 FV	Terminal board PA/35/2 FV	Barrette PA/35/2 FV	Klemmleiste
*	5.255.084.783	Imballo	Packaging	Emballagr	Verpackung

- I disegni dei prodotti e dei loro componenti, potrebbero non rappresentarne la forma originale.  
- The drawings of the products or their components may differ from their actual original shape.  
- Les dessins des produits ou de leur composants peuvent être différents de leur formes originelles.  
- Die Bilder der Produkten oder ihrer Bestandteilen könnten ihrer Originalform nicht entsprechen.

**VORTICE ELETTROSOCIALI S.p.A.**  
Strada Cerca, 2 - frazione di Zoate  
20067 TRIBIANO (MI)  
Tel. (+39) 02-90.69.91  
Fax (+39) 02-90.64.625  
ITALIA

**VORTICE LIMITED**  
Beeches House - Eastern  
Avenue  
Burton on Trent  
DE13 0BB  
Tel. (+44) 1283-492949  
Fax (+44) 1283-544121  
UNITED KINGDOM

**VORTICE FRANCE**  
15/33 Rue Le Corbusier  
Europarc - CS 30007  
94046 CRETEIL Cedex  
Tel. (+33) 1-55.12.50.00  
Fax (+33) 1-55.12.50.01  
FRANCE

COD. 9994000484