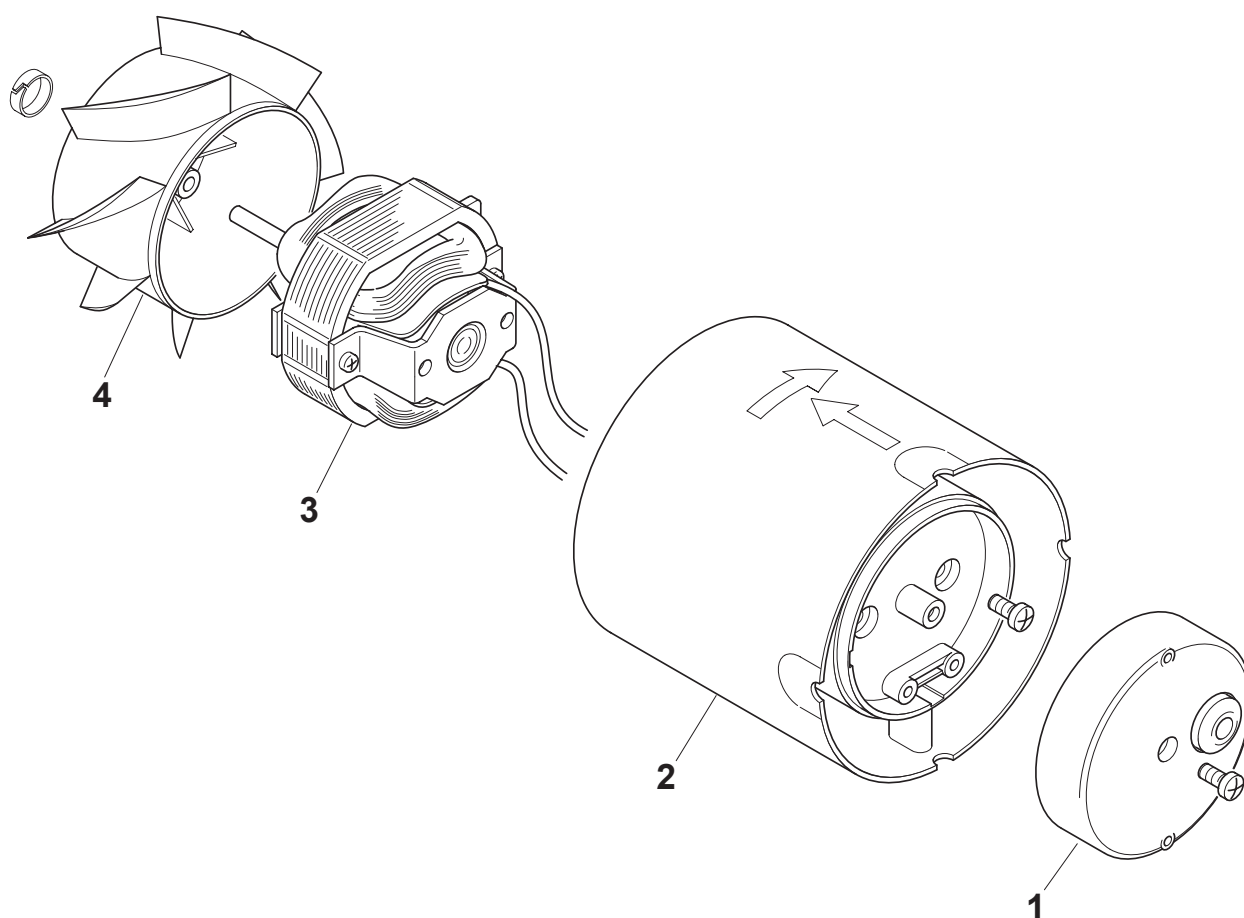


MG 150/6" LL

REV. 01
27/03/2012

IT	Cod. 11104 - 230-240V ~ 50 Hz
EN	Cod. 11104 - 230-240V ~ 50 Hz
FR	Cod. 11104 - 230-240V ~ 50 Hz
DE	Cod. 11104 - 230-240V ~ 50 Hz



VORTICE ELETTROSOCIALI S.p.A.
Strada Cerca, 2 - frazione di Zoate
20067 TRIBIANO (MI)
Tel. (+39) 02-90.69.91
Fax (+39) 02-90.64.625
ITALIA

VORTICE LIMITED
Beeches House - Eastern
Avenue
Burton on Trent
DE13 0BB
Tel. (+44) 1283-492949
Fax (+44) 1283-544121
UNITED KINGDOM

VORTICE FRANCE
15/33 Rue Le Corbusier
Europarc
94046 CRETEIL Cedex
Tel. (+33) 1-55.12.50.00
Fax (+33) 1-55.12.50.01
FRANCE

COD. 9994000884

MG 150/6'' LL

REV. 01
27/03/2012

IT Cod. 11104 - 230-240V ~ 50 Hz

EN Cod. 11104 - 230-240V ~ 50 Hz

FR Cod. 11104 - 230-240V ~ 50 Hz

DE Cod. 11104 - 230-240V ~ 50 Hz



Ref.	Cod.	Descrizione	Description	Description	Beschreibung
1	1.127.191.031	Coperchio tampografato	Couvercle	Cover	Abdeckung
2	1.529.001.048	Portamotore	Porte-moteur	Motor support	Motorträger
3	1.325.000.399	Motore	Motor	Moteur	Motor
4	1.211.001.022	Girante	Turbine	Impeller	Läufer
*	5.256.084.104	Imballo	Packaging	Emballagr	Verpackung

- I disegni dei prodotti e dei loro componenti, potrebbero non rappresentarne la forma originale.
- The drawings of the products or their components may differ from their actual original shape.
- Les dessins des produits ou de leur composants peuvent être différents de leur formes originelles.
- Die Bilder der Produkten oder ihrer Bestandteilen könnten ihrer Originalform nicht entsprechen.

VORTICE ELETTROSOCIALI S.p.A.
Strada Cerca, 2 - frazione di Zoate
20067 TRIBIANO (MI)
Tel. (+39) 02-90.69.91
Fax (+39) 02-90.64.625
ITALIA

VORTICE LIMITED
Beeches House - Eastern
Avenue
Burton on Trent
DE13 0BB
Tel. (+44) 1283-492949
Fax (+44) 1283-544121
UNITED KINGDOM

VORTICE FRANCE
15/33 Rue Le Corbusier
Europarc
94046 CRETEIL Cedex
Tel. (+33) 1-55.12.50.00
Fax (+33) 1-55.12.50.01
FRANCE

COD. 9994000884