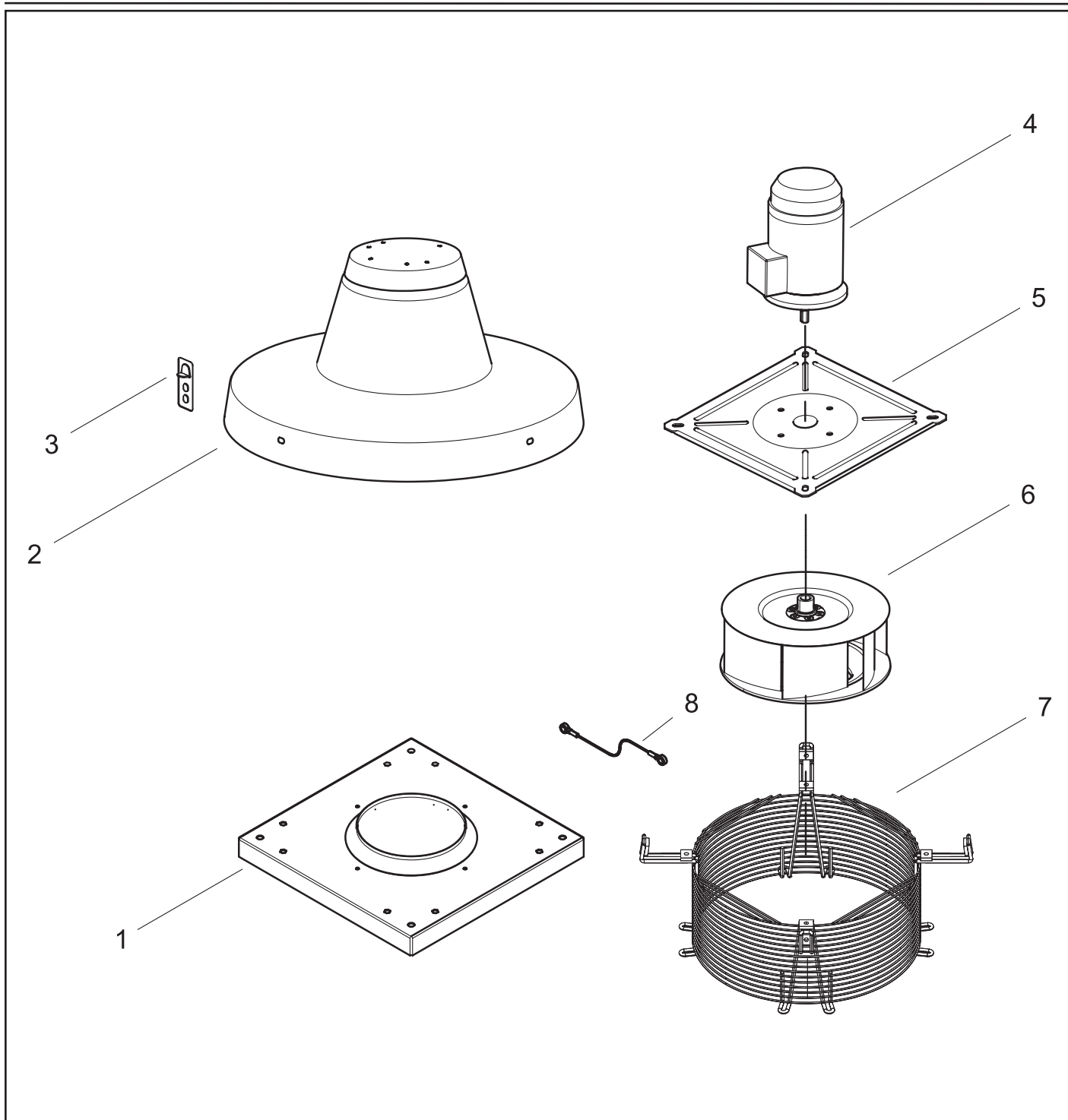


TRM 20 ED 4P

REV. 02
29/03/2012

| | |
|-----------|-------------------------------|
| IT | Cod. 15043 - 220-240V ~ 50 Hz |
| EN | Cod. 15043 - 220-240V ~ 50 Hz |
| FR | Cod. 15043 - 220-240V ~ 50 Hz |
| DE | Cod. 15043 - 220-240V ~ 50 Hz |



VORTICE ELETTROSOCIALI S.p.A.
Strada Cerca, 2 - frazione di Zoate
20067 TRIBIANO (MI)
Tel. (+39) 02-90.69.91
Fax (+39) 02-90.64.625
ITALIA

VORTICE LIMITED
Beeches House - Eastern
Avenue
Burton on Trent
DE13 0BB
Tel. (+44) 1283-492949
Fax (+44) 1283-544121
UNITED KINGDOM

VORTICE FRANCE
15/33 Rue Le Corbusier
Europarc
94046 CRETEIL Cedex
Tel. (+33) 1-55.12.50.00
Fax (+33) 1-55.12.50.01
FRANCE

COD. 9994000021

TRM 20 ED 4P

REV. 02
29/03/2012

IT Cod. 15043 - 220-240V ~ 50 Hz

EN Cod. 15043 - 220-240V ~ 50 Hz

FR Cod. 15043 - 220-240V ~ 50 Hz

DE Cod. 15043 - 220-240V ~ 50 Hz



| Ref. | Cod. | Descrizione | Description | Description | Beschreibung |
|------|---------------|-------------------------|---------------------|------------------------------|----------------------|
| 1 | 1.025.191.043 | Base | Base | Base | Basis |
| 2 | 1.055.191.007 | Coprimotore | Motor cover | Protège-moteur | Motorabdeckung |
| 3 | 1.683.201.004 | Golfare di sollevamento | Lifting eyebolt | Boulon à oeil de soulevement | Ringschraube |
| 4 | 1.241.000.069 | Motore | Motor | Moteur | Motor |
| 5 | 1.565.201.024 | Piastra sostegno motore | Motor support plate | Plaque support moteur | Motortragerplatte |
| 6 | 1.217.201.009 | Girante | Impeller | Turbine | Lüfterrad |
| 7 | 1.583.191.081 | Retina | Grid | Grille | Gitter |
| 8 | 1.132.011.001 | Cavo sicurezza | Security cable | Câble de sécurité | Sicherheitstahlkabel |
| * | 5.255.084.333 | Imballo | Packaging | Emballagr | Verpackung |

- I disegni dei prodotti e dei loro componenti, potrebbero non rappresentarne la forma originale.
- The drawings of the products or their components may differ from their actual original shape.
- Les dessins des produits ou de leur composants peuvent être différents de leur formes originelles.
- Die Bilder der Produkten oder ihrer Bestandteilen könnten ihrer Originalform nicht entsprechen.

VORTICE ELETTROSOCIALI S.p.A.
Strada Cerca, 2 - frazione di Zoate
20067 TRIBIANO (MI)
Tel. (+39) 02-90.69.91
Fax (+39) 02-90.64.625
ITALIA

VORTICE LIMITED
Beeches House - Eastern
Avenue
Burton on Trent
DE13 0BB
Tel. (+44) 1283-492949
Fax (+44) 1283-544121
UNITED KINGDOM

VORTICE FRANCE
15/33 Rue Le Corbusier
Europarc
94046 CRETEIL Cedex
Tel. (+33) 1-55.12.50.00
Fax (+33) 1-55.12.50.01
FRANCE

COD. 9994000021