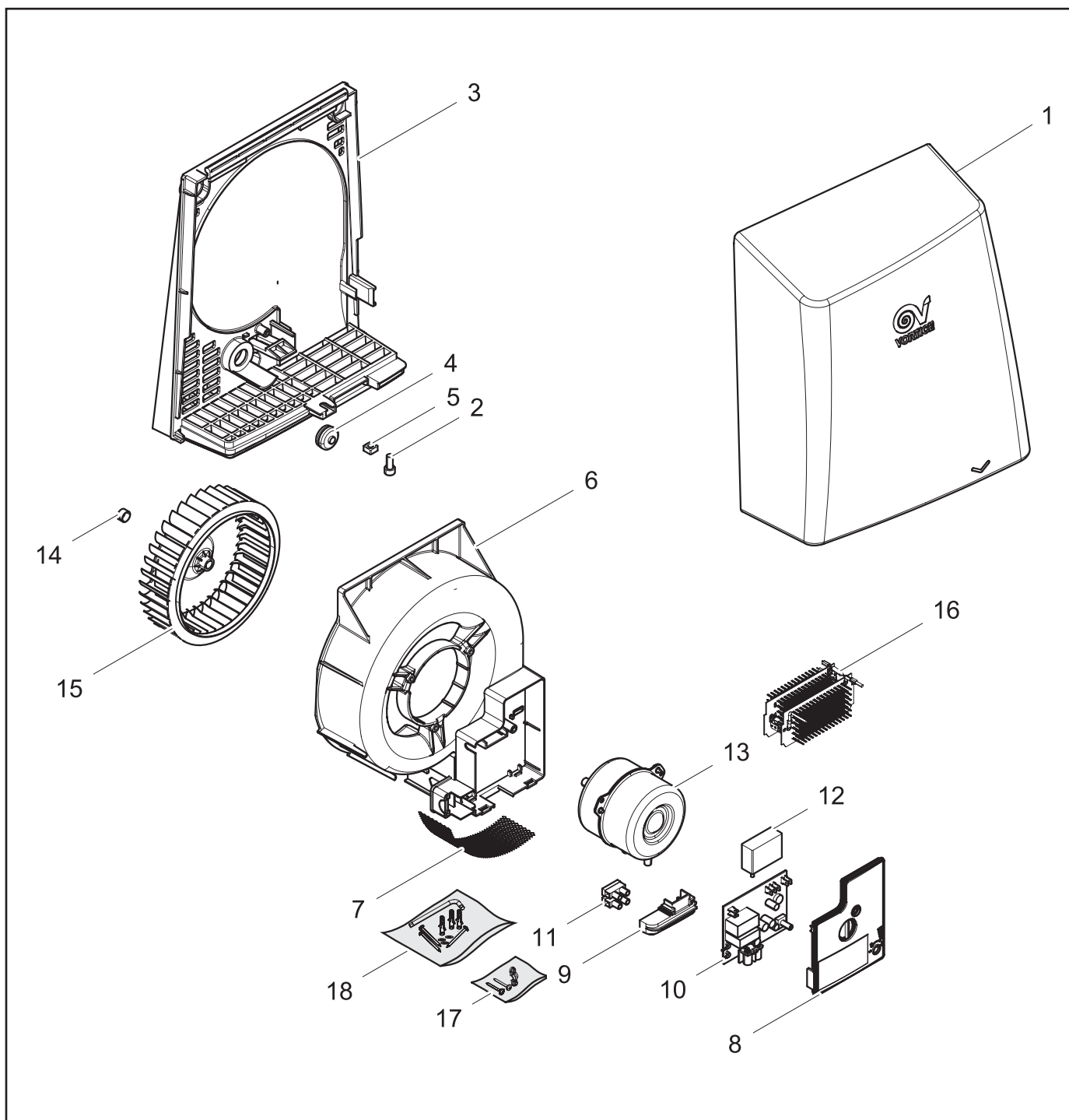


# OPTIMAL DRY R A

REV. 04  
16/04/2013

<b>IT</b>	Cod. 19227 - 220 - 240 V ~ 50/60 Hz
<b>EN</b>	Cod. 19227 - 220 - 240 V ~ 50/60 Hz
<b>FR</b>	Cod. 19227 - 220 - 240 V ~ 50/60 Hz
<b>DE</b>	Cod. 19227 - 220 - 240 V ~ 50/60 Hz



**VORTICE ELETTROSOCIALI S.p.A.**  
Strada Cerca, 2 - frazione di Zoate  
20067 TRIBIANO (MI)  
Tel. (+39) 02-90.69.91  
Fax (+39) 02-90.64.625  
ITALIA

**VORTICE LIMITED**  
Beeches House - Eastern  
Avenue  
Burton on Trent  
DE13 0BB  
Tel. (+44) 1283-492949  
Fax (+44) 1283-544121  
UNITED KINGDOM

**VORTICE FRANCE**  
15/33 Rue Le Corbusier  
Europarc - CS 3007  
94046 CRETEIL Cedex  
Tel. (+33) 1-55.12.50.00  
Fax (+33) 1-55.12.50.01  
FRANCE

COD. 9994000016

# OPTIMAL DRY R A

REV. 04  
16/04/2013

<b>IT</b>	Cod. 19227 - 220 - 240 V ~ 50/60 Hz
<b>EN</b>	Cod. 19227 - 220 - 240 V ~ 50/60 Hz
<b>FR</b>	Cod. 19227 - 220 - 240 V ~ 50/60 Hz
<b>DE</b>	Cod. 19227 - 220 - 240 V ~ 50/60 Hz



Ref.	Cod.	Descrizione	Description	Description	Beschreibung
1	1127022001	Coperchio frontale	Front cover	Couvercle frontal	Frontdeckel
2	5673024001	Vite chiusura TCEI M6x16	TCEI M6x16 screw	Vis TCEI M6x16	Schraube TCEI M6x16
3	1196132022	Flangia	Flange	Bride	Flansch
4	5304061019	Passacavo	Cable gland	Passe-câble	Kabeldurchlass
5	5680011002	Dado quadro M6	M6 square nut	Ecrou carré M6	Vierkantmutter M6
6	1072132012	Coclea portamotore	Motor support	Supporte moteur	Motorschnecke
7	1193006026	Filtro a rete	Mech filter	Filtre à grille	Netzfilter
8	1127126052	Coperchio scatola elettrica	Cover for electric box	Couvercle boîtier électrique	Ceckel f.Dose
9	5187124005	Vetrino led	Led lens	Verre led	Glas f.led
10	1247000129	Gruppo elettronico	Electronic group	Carte électronique	Elektronikgruppe
11	5310111015	Morsettiera	Terminal board	Bornier	Klemmbrett
12	5157000137	Condensatore 1,2 µf	1.2 µf capacitor	Condensateur 1,2 µf	Kondensator 1,2 µf
13	1325000324	Motore	Motor	Moteur	Motor
14	5001176060	Anello SCB	SCB ring	Bague SCB	SCB-Ring
15	1205132005	Girante	Impeller	Turbine	Lüfterrad
16	5310000231	Resistenza	Heating element	Résistance	Widerstand
17	2644000108	Sacchetto accessori fermacavo	Cable fixing accessories bag	Sachet accessoires presse-câble	Tüte mit Zubehör f. Kabelbefestigung
18	2644000196	Sacchetto accessori montaggio	Assembly accessories bag	Sachet accessoires montage	Tüte mit Montagezubehör

**VORTICE ELETTROSOCIALI S.p.A.**  
Strada Cerca, 2 - frazione di Zoate  
20067 TRIBIANO (MI)  
Tel. (+39) 02-90.69.91  
Fax (+39) 02-90.64.625  
ITALIA

**VORTICE LIMITED**  
Beeches House - Eastern  
Avenue  
Burton on Trent  
DE13 0BB  
Tel. (+44) 1283-492949  
Fax (+44) 1283-544121  
UNITED KINGDOM

**VORTICE FRANCE**  
15/33 Rue Le Corbusier  
Europarc - CS 3007  
94046 CRETEIL Cedex  
Tel. (+33) 1-55.12.50.00  
Fax (+33) 1-55.12.50.01  
FRANCE

COD. 9994000016