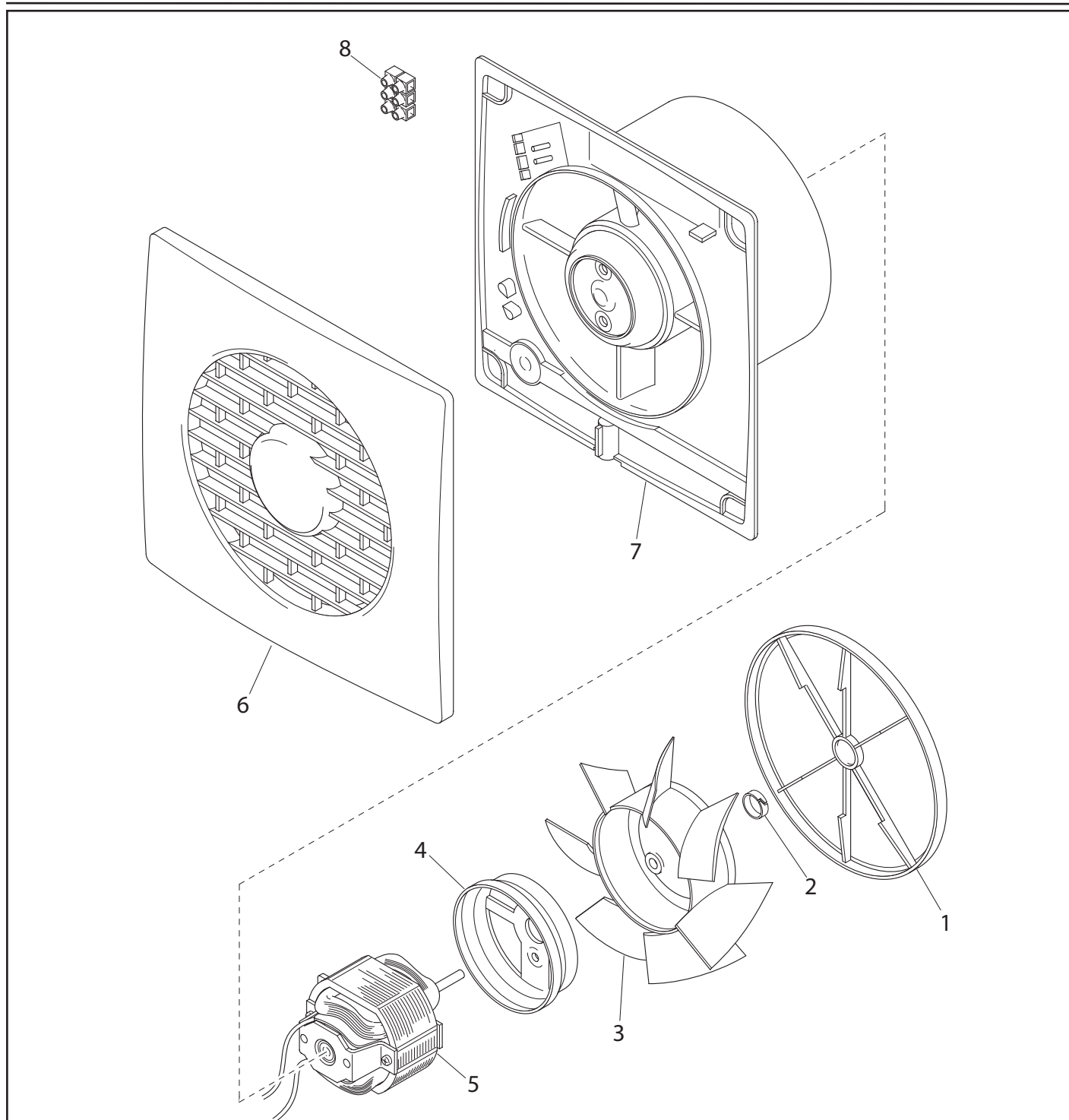


MF 150/6''

REV. 01
20/05/2011

IT	Cod. 11.125	230-240 V ~ 50 Hz
EN	Cod. 11.125	230-240 V ~ 50 Hz
FR	Cod. 11.125	230-240 V ~ 50 Hz
DE	Cod. 11.125	230-240 V ~ 50 Hz



VORTICE ELETTROSOCIALI S.p.A.
Strada Cerca, 2 - frazione di Zoate
20067 TRIBIANO (MI)
Tel. (+39) 02-90.69.91
Fax (+39) 02-90.64.625
ITALIA

VORTICE LIMITED
Beeches House - Eastern
Avenue
Burton on Trent
DE13 0BB
Tel. (+44) 1283-492949
Fax (+44) 1283-544121
UNITED KINGDOM

VORTICE FRANCE
72 Rue Baratte-Cholet
94106 Saint Maur Cedex
Tel. (+33) 1-55.12.50.00
Fax (+33) 1-55.12.50.01
FRANCE

COD. 9994000741

MF 150/6''

REV. 01
20/05/2011

IT	Cod. 11.125	230-240 V ~ 50 Hz
EN	Cod. 11.125	230-240 V ~ 50 Hz
FR	Cod. 11.125	230-240 V ~ 50 Hz
DE	Cod. 11.125	230-240 V ~ 50 Hz



Ref.	Cod.	Descrizione	Description	Description	Beschreibung
1	1.174.000.007	Valvola di non ritorno	Valve	Valve	Ventil
2	5.001.176.060	Anello SCB/2	Bague SCB/2	Ring SCB/2	Ring SCB/2
3	1.211.001.022	Girante MF 150/6"	Turbine MF 150/6"	Impeller MF 150/6"	Laüfer MF 150/6"
4	1.103.111.002	Coprimotore M 150/6"	Couvercle moteur M 150/6"	Motor cover M 150/6"	Gehäuse M 150/6"
5	1.325.000.398	Motore	Moteur	Motor	Motor
6	1.235.001.078	Griglia MF 150/6"	Grille MF 150/6"	Grif MF 150/6"	Flansch MF 150/6"
7	1.259.001.032	Portamotore	Porte-moteur	Motor support	Motorträger
8	5.310.086.001	Morsettiera PA 35/2 FV	Barrette PA 35/2 FV	Terminal board PA 35/2 FV	Klemmleiste PA 35/2 FV
*	5.256.084.060	Imballo	Emballage	Packaging	Verpackung

- I disegni dei prodotti e dei loro componenti, potrebbero non rappresentarne la forma originale.
- The drawings of the products or their components may differ from their actual original shape.
- Les dessins des produits ou de leur composants peuvent être différents de leur formes originelles.
- Die Bilder der Produkten oder ihrer Bestandteilen könnten ihrer Originalform nicht entsprechen.

VORTICE ELETTROSOCIALI S.p.A.
Strada Cerca, 2 - frazione di Zoate
20067 TRIBIANO (MI)
Tel. (+39) 02-90.69.91
Fax (+39) 02-90.64.625
ITALIA

VORTICE LIMITED
Beeches House - Eastern
Avenue
Burton on Trent
DE13 0BB
Tel. (+44) 1283-492949
Fax (+44) 1283-544121
UNITED KINGDOM

VORTICE FRANCE
72 Rue Baratte-Cholet
94106 Saint Maur Cedex
Tel. (+33) 1-55.12.50.00
Fax (+33) 1-55.12.50.01
FRANCE

COD. 9994000741