

MFO 100 / 4" T

REV. 03
25/06/2013

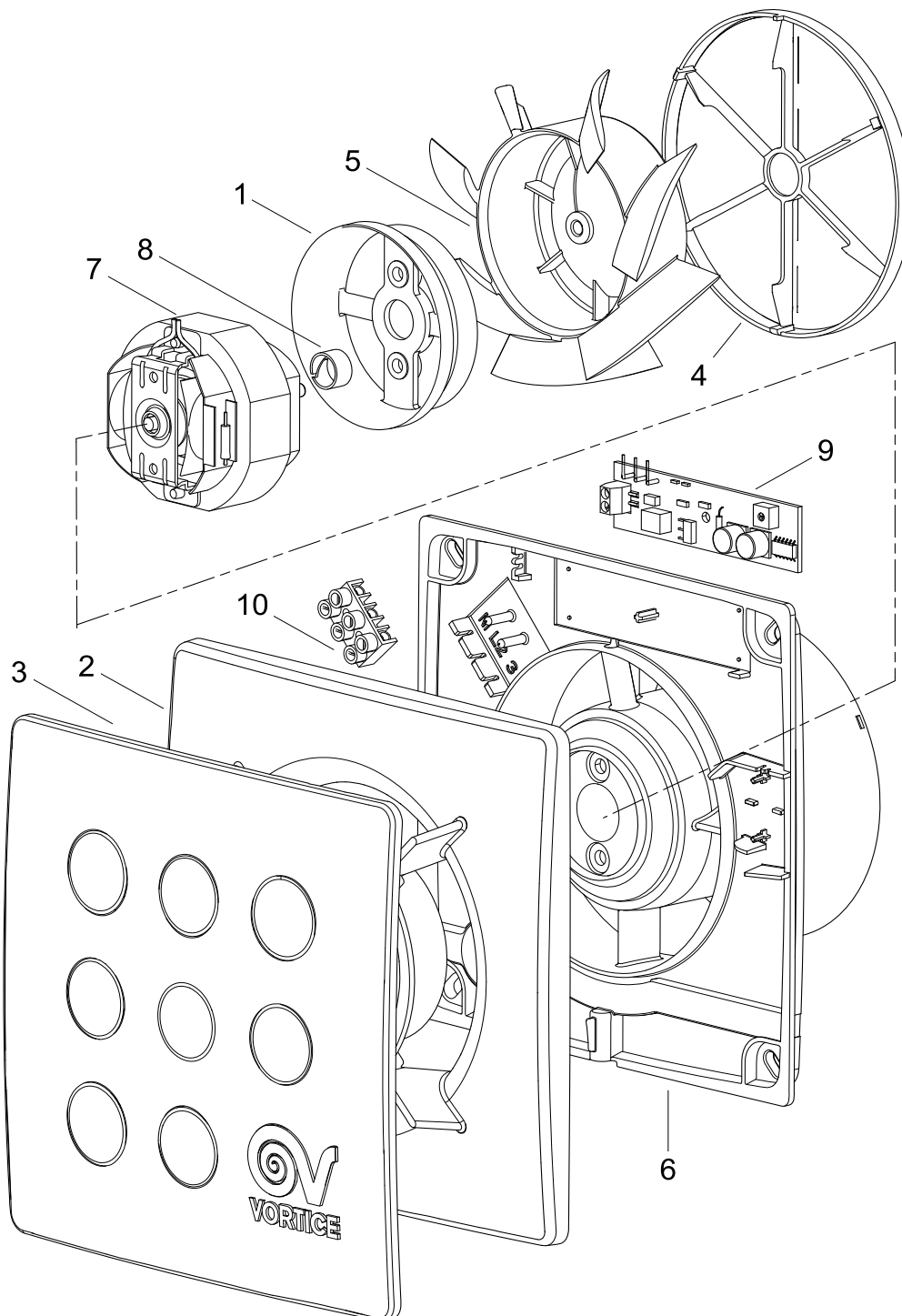


IT Cod. 11146 - 230 V ~ 50 Hz

EN Cod. 11146 - 230 V ~ 50 Hz

FR Cod. 11146 - 230 V ~ 50 Hz

DE Cod. 11146 - 230 V ~ 50 Hz



VORTICE ELETTROSOCIALI S.p.A.
Strada Cerca, 2 - frazione di Zoate
20067 TRIBIANO (MI)
Tel. (+39) 02-90.69.91
Fax (+39) 02-90.64.625
ITALIA

VORTICE LIMITED
Beeches House - Eastern
Avenue
Burton on Trent
DE13 0BB
Tel. (+44) 1283-492949
Fax (+44) 1283-544121
UNITED KINGDOM

VORTICE FRANCE
15/33 Rue Le Corbusier
Europarc - CS 30007
94046 CRETEIL Cedex
Tel. (+33) 1-55.12.50.00
Fax (+33) 1-55.12.50.01
FRANCE

COD. 9994000485

MFO 100 / 4" T

REV. 03
25/03/2013

IT	Cod. 11146 - 230 V ~ 50 Hz
EN	Cod. 11146 - 230 V ~ 50 Hz
FR	Cod. 11146 - 230 V ~ 50 Hz
DE	Cod. 11146 - 230 V ~ 50 Hz



Ref.	Cod.	Descrizione	Description	Description	Beschreibung
1	1.103.111.002	Coprimotore M 150/6	Motor cover M 150/6	Couvercle moteur M 150/6	Gehäuse M 150/6
2	1.127.001.127	Coperchio portamotore MFO 100/4"	Motor holder Support	Cache Porte-moteur	Motorträger deckel
3	1.127.191.075	Coperchio piatto MFO 90/100	Flat cover MFO 90/100	Cache plat MFO 90/100	Platt deckel MFO 90/100
4	1.174.000.005	Valvola non ritorno MF 100/4"compl.	Check valve MF 100	Soupape de retenue MF 100	Rückschlagventil MF 100
5	1.211.132.011	Girante MF 100/4"	Impeller MF 100/4	Turbine MF 100/4	Läufer MF 100/4
6	1.259.001.030	Portamotore MF 100	Motor support MF 100	Porte-moteur MF 100	Motorträger MF 100
7	1.325.000.476	Motore bronzine M 100	Bush Motor	Moteur a buisson	Lagerbuchse Motor
8	5.001.176.060	Anello SCB/2 186/17/00	Ring SCB/2	Bague SCB/2	Ring SCB/2
9	5.247.000.669	Circuito timer MF (SMD)	Timer Board MF (SMD)	Timer carte MF (FT)	Timer karte MF (SMD)
10	5.310.086.002	Morsettiera PA 35/3 FV	Terminal board PA 35/3 FV	Barrette PA 35/3 FV	Klemmleiste PA 35/3 FV

VORTICE ELETTROSOCIALI S.p.A.
Strada Cerca, 2 - frazione di Zoate
20067 TRIBIANO (MI)
Tel. (+39) 02-90.69.91
Fax (+39) 02-90.64.625
ITALIA

VORTICE LIMITED
Beeches House - Eastern
Avenue
Burton on Trent
DE13 0BB
Tel. (+44) 1283-492949
Fax (+44) 1283-544121
UNITED KINGDOM

VORTICE FRANCE
15/33 Rue Le Corbusier
Europarc - CS 30007
94046 CRETEIL Cedex
Tel. (+33) 1-55.12.50.00
Fax (+33) 1-55.12.50.01
FRANCE

COD. 9994000485