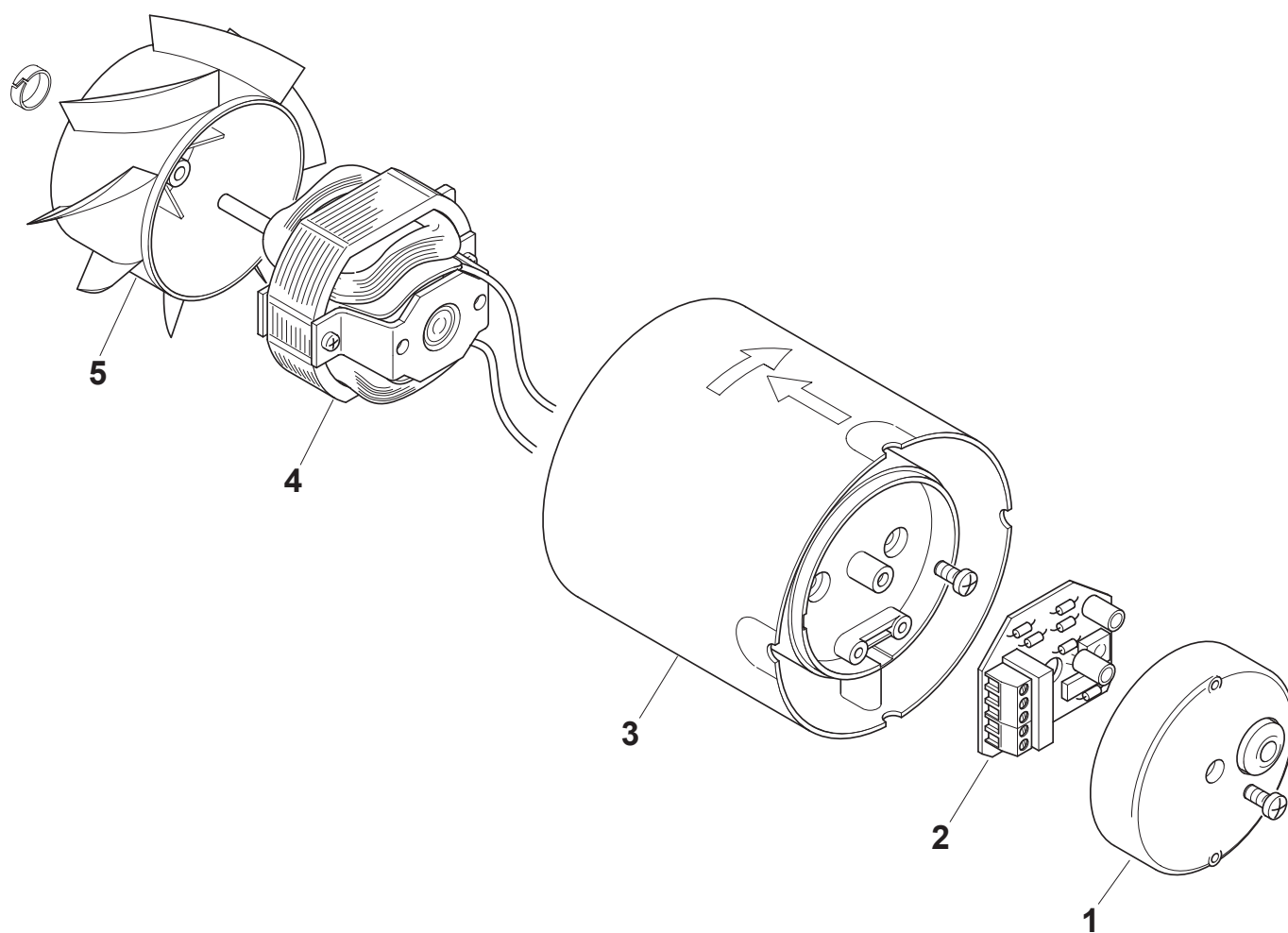


# MG 100/4" T LL

REV. 02  
22/03/2013

<b>IT</b>	Cod. 11101 - 230-240V ~ 50 Hz
<b>EN</b>	Cod. 11101 - 230-240V ~ 50 Hz
<b>FR</b>	Cod. 11101 - 230-240V ~ 50 Hz
<b>DE</b>	Cod. 11101 - 230-240V ~ 50 Hz



**VORTICE ELETTROSOCIALI S.p.A.**  
Strada Cerca, 2 - frazione di Zoate  
20067 TRIBIANO (MI)  
Tel. (+39) 02-90.69.91  
Fax (+39) 02-90.64.625  
ITALIA

**VORTICE LIMITED**  
Beeches House - Eastern  
Avenue  
Burton on Trent  
DE13 0BB  
Tel. (+44) 1283-492949  
Fax (+44) 1283-544121  
UNITED KINGDOM

**VORTICE FRANCE**  
15/33 Rue Le Corbusier  
Europarc - CS 30007  
94046 CRETEIL Cedex  
Tel. (+33) 1-55.12.50.00  
Fax (+33) 1-55.12.50.01  
FRANCE

COD. 9994000885

# MG 100/4" T LL

REV. 02  
22/03/2013

**IT** Cod. 11101 - 230-240V ~ 50 Hz

**EN** Cod. 11101 - 230-240V ~ 50 Hz

**FR** Cod. 11101 - 230-240V ~ 50 Hz

**DE** Cod. 11101 - 230-240V ~ 50 Hz



Ref.	Cod.	Descrizione	Description	Description	Beschreibung
1	1.127.191.030	Coperchio tampografato	Couvercle	Cover	Abdeckung
2	5.247.000.198	Circuito Timer	Fiche minuterie	Timer card	Karte Timer
3	1.529.001.027	Portamotore	Porte-moteur	Motor support	Motorträger
4	1.325.000.477	Motore	Motor	Moteur	Motor
5	1.211.132.011	Girante	Turbine	Impeller	Läufer
*	5.256.084.100	Imballo	Packaging	Emballagr	Verpackung

- I disegni dei prodotti e dei loro componenti, potrebbero non rappresentarne la forma originale.  
- The drawings of the products or their components may differ from their actual original shape.  
- Les dessins des produits ou de leur composants peuvent être différents de leur formes originelles.  
- Die Bilder der Produkten oder ihrer Bestandteilen könnten ihrer Originalform nicht entsprechen.

## VORTICE ELETTROSOCIALI S.p.A.

Strada Cerca, 2 - frazione di Zoate  
20067 TRIBIANO (MI)  
Tel. (+39) 02-90.69.91  
Fax (+39) 02-90.64.625  
ITALIA

## VORTICE LIMITED

Beeches House - Eastern  
Avenue  
Burton on Trent  
DE13 0BB  
Tel. (+44) 1283-492949  
Fax (+44) 1283-544121  
UNITED KINGDOM

## VORTICE FRANCE

15/33 Rue Le Corbusier  
Europarc - CS 30007  
94046 CRETEIL Cedex  
Tel. (+33) 1-55.12.50.00  
Fax (+33) 1-55.12.50.01  
FRANCE

COD. 9994000885