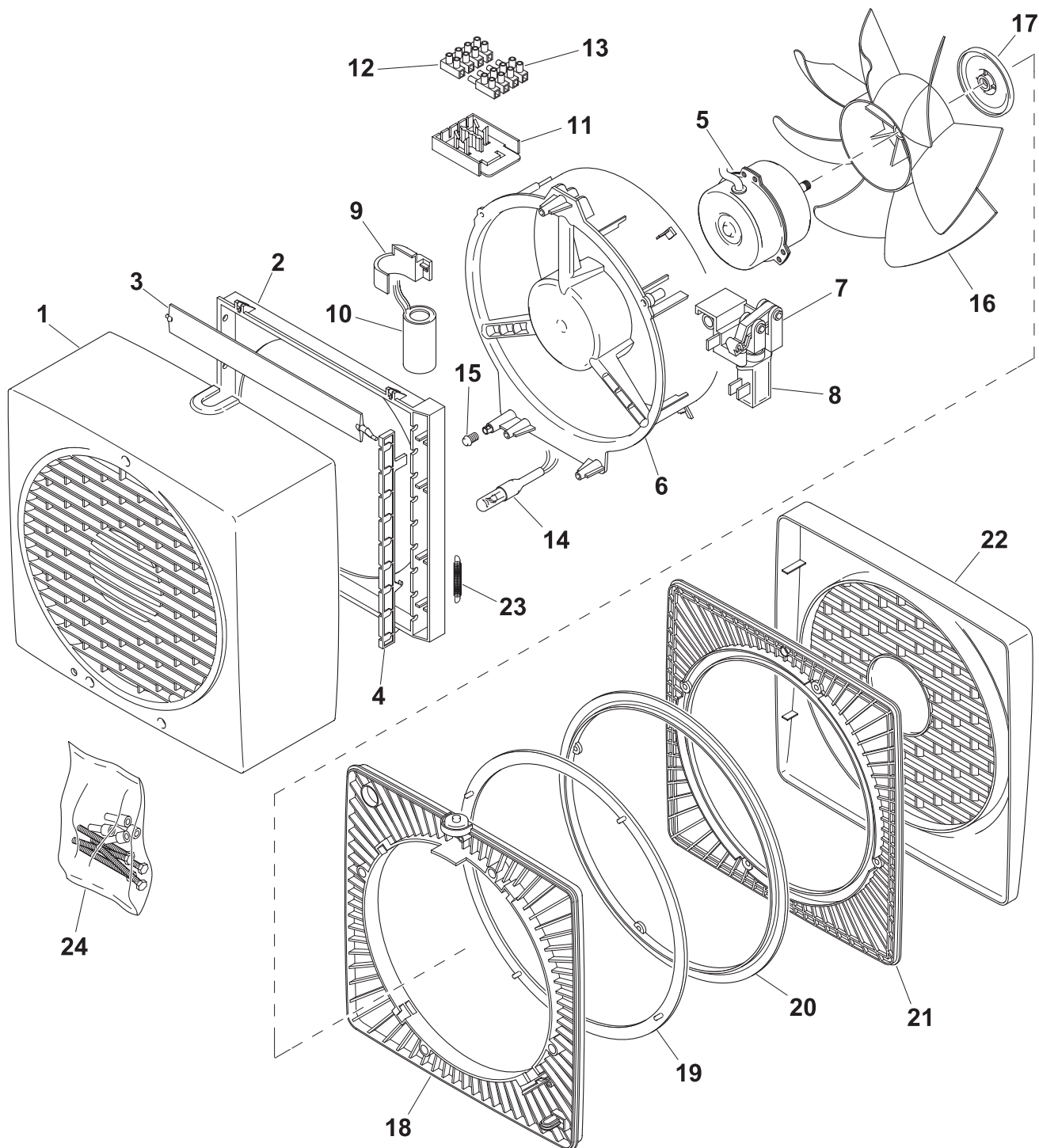


VORTICE 300/12" AR

REV. 03
06/11/2013



IT	Cod. 12412	220 - 240 V ~ 50/60 Hz
EN	Cod. 12412	220 - 240 V ~ 50/60 Hz
FR	Cod. 12412	220 - 240 V ~ 50/60 Hz
DE	Cod. 12412	220 - 240 V ~ 50/60 Hz



VORTICE ELETTROSOCIALI S.p.A.
Strada Cerca, 2 - frazione di Zoate
20067 TRIBIANO (MI)
Tel. (+39) 02-90.69.91
Fax (+39) 02-90.64.625
ITALIA

VORTICE LIMITED
Beeches House - Eastern
Avenue
Burton on Trent
DE13 0BB
Tel. (+44) 1283-492949
Fax (+44) 1283-544121
UNITED KINGDOM

VORTICE FRANCE
15/33 Rue Le Corbusier
Europarc
94046 CRETEIL Cedex
Tel. (+33) 1-55.12.50.00
Fax (+33) 1-55.12.50.01
FRANCE

COD. 9994000248

VORTICE 300/12" AR

REV. 03
06/11/2013

IT	Cod. 12412	220 - 240 V ~ 50/60 Hz
EN	Cod. 12412	220 - 240 V ~ 50/60 Hz
FR	Cod. 12412	220 - 240 V ~ 50/60 Hz
DE	Cod. 12412	220 - 240 V ~ 50/60 Hz



Ref.	Cod.	Descrizione	Description	Description	Beschreibung
1	1.235.001.054	Griglia incasso interna	Internal grid	Grille intérieure	Innengitter
2	1.139.126.003	Telaio alette	Frame	Châssis	Rahmen
3	1.010.126.010	Alette	Fin	Ailette	Feder
4	1.304.124.011	Asta alette	Rod for tab	Tige pour ailette	Stange für Flügel
5	1.512.000.045	Motore	Motor	Moteur	Motor
6	1.529.001.044	Portamotore	Motor support	Porte-moteur	Motorhalterung
7	1.247.000.157	Gruppo termoattuatore (+8)	Group Thermoactuator(+8)	Groupe Thermoactionneur (+8)	Einheit Thermoschaltglied(+8)
8	5.247.000.127	Termoattuatore	Thermoactuator	Thermoactionneur	Thermoschaltglied
9	1.653.126.023	Portacondensatore	Support Capacitor	Support condensateur	Träger Kondensator
10	5.157.000.151	Condensatore unip.1,1UF 450V	Capacitor UNIP-1,1UF 450V	Condensateur UNIP.1,1UF 450V	Kondensator UNIP.1,1UF 450V
11	1.653.126.022	Portamorsettiera	Terminal board housing	Porte-bornier	Klemmleistensockel
12	5.310.111.087	Morsettiera femmina	Terminal board	Barrette	Klemmleiste
13	5.310.111.086	Morsettiera maschio	Terminal board	Barrette	Klemmleiste
14	5.283.000.032	Lampada spia	Pilot light	Lampe-témoin	Kontrolleuchte
15	5.304.000.033	Gemma per lampada spia	Indicator light	Lampe-témoin	Glas für Kontrolleuchte
16	1.211.132.003	Girante	Impeller	Turbine	Läufer
17	1.664.132.002	Tappo girante	Cap	Bouchon	Stopfen
18	1.196.126.038	Flangia portamotore	Motor support flange	Bride porte-moteur	Flansch Motorträger
19	1.229.043.009	Guarnizione flange	Gasket	Garniture	Dichtung
20	1.229.043.008	Guarnizione retine	Gasket	Garniture	Dichtung
21	1.196.126.029	Flangia retina	Grid flange	Bride pour grille	Flansch für Gitter
22	1.583.001.028	Retina esterna	Grid	Grille	Gitter
23	5.700.011.023	Molla 0,50	Spring 0,50	Ressort 0,50	Feder 0,50
24	2.644.000.101	Sacchetto accessori	Accessories bag	Sachet accessoires	Beutel
2+3+ 4+23	1.139.000.003	Telaio alette completo	End frame	Châssis complet	Rahmen komplett

VORTICE ELETTROSOCIALI S.p.A.
Strada Cerca, 2 - frazione di Zoate
20067 TRIBIANO (MI)
Tel. (+39) 02-90.69.91
Fax (+39) 02-90.64.625
ITALIA

VORTICE LIMITED
Beeches House - Eastern
Avenue
Burton on Trent
DE13 0BB
Tel. (+44) 1283-492949
Fax (+44) 1283-544121
UNITED KINGDOM

VORTICE FRANCE
15/33 Rue Le Corbusier
Europarc
94046 CRETEIL Cedex
Tel. (+33) 1-55.12.50.00
Fax (+33) 1-55.12.50.01
FRANCE

COD. 9994000248