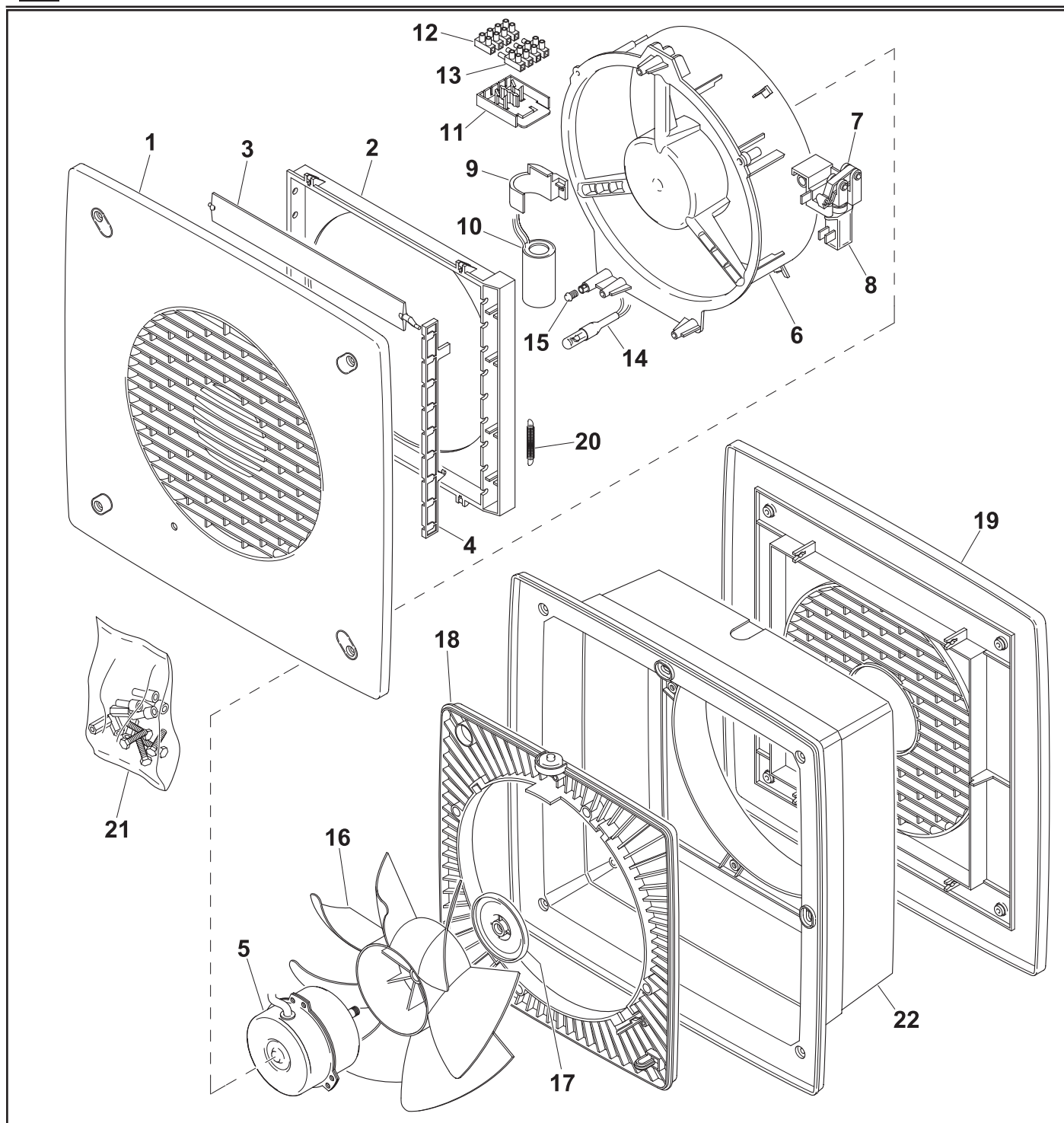


VORTICE 230/9" ARI

REV. 03
06/11/2013



IT	Cod. 12453	220 - 240 V ~ 50/60 Hz
EN	Cod. 12453	220 - 240 V ~ 50/60 Hz
FR	Cod. 12453	220 - 240 V ~ 50/60 Hz
DE	Cod. 12453	220 - 240 V ~ 50/60 Hz



VORTICE ELETTROSOCIALI S.p.A.
Strada Cerca, 2 - frazione di Zoate
20067 TRIBIANO (MI)
Tel. (+39) 02-90.69.91
Fax (+39) 02-90.64.625
ITALIA

VORTICE LIMITED
Beeches House - Eastern
Avenue
Burton on Trent
DE13 0BB
Tel. (+44) 1283-492949
Fax (+44) 1283-544121
UNITED KINGDOM

VORTICE FRANCE
15/33 Rue Le Corbusier
Europarc
94046 CRETEIL Cedex
Tel. (+33) 1-55.12.50.00
Fax (+33) 1-55.12.50.01
FRANCE

COD. 9994000246

VORTICE 230/9" ARI

REV. 03
06/11/2013

IT	Cod. 12453	220 - 240 V ~ 50/60 Hz
EN	Cod. 12453	220 - 240 V ~ 50/60 Hz
FR	Cod. 12453	220 - 240 V ~ 50/60 Hz
DE	Cod. 12453	220 - 240 V ~ 50/60 Hz



Ref.	Cod.	Descrizione	Description	Description	Beschreibung
1	1.235.001.058	Griglia incasso interna	Internal grid	Grille intérieure	Innengitter
2	1.139.126.002	Telaio alette	Frame	Châssis	Rahmen
3	1.010.126.009	Alette	Fin	Ailette	Feder
4	1.304.124.010	Asta alette	Rod for tab	Tige pour ailette	Stange für Flügel
5	1.512.000.044	Motore	Motor	Moteur	Motor
6	1.529.001.043	Portamotore	Motor support	Porte-moteur	Motorhalterung
7	1.247.000.124	Gruppo termoattuatore (+8)	Group Thermoactuator(+8)	Groupe Thermoactionneur(+8)	Einheit Thermoschaltglied(+8)
8	5.247.000.127	Termoattuatore a spinta	Thermoactuator	Thermoactionneur	Thermoschaltglied
9	1.653.126.023	Portacondensatore	Support Capacitor	Support condensateur	Träger Kondensator
10	5.157.000.143	Condensatore unip.0,5UF 450V	Capacitor UNIP-0,5UF 450V	Condensateur UNIP0,5UF 450V	Kondensator UNIP0,5UF 450V
11	1.653.126.022	Portamorsettiera	Terminal board housing	Porte-bornier	Klemmleistensockel
12	5.310.111.086	Morsettiera femmina	Terminal board	Barrette	Klemmleiste
13	5.310.111.087	Morsettiera maschio	Terminal board	Barrette	Klemmleiste
14	5.283.000.031	Lampada spia	Pilot light	Lampe-témoin	Kontrolleuchte
15	5.304.000.033	Gemma per lampada spia	Indicator light	Lampe-témoin	Glas für Kontrolleuchte
16	1.211.132.002	Girante	Impeller	Turbine	Läufer
17	1.664.132.002	Tappo girante	Cap	Bouchon	Stopfen
18	1.196.126.037	Flangia portamotore	Motor support flange	Bride porte-moteur	Flansch Motorträger
19	1.235.001.059	Griglia incasso esterna	Grid	Grille	Gitter
20	5.700.011.023	Molla 0,50	Spring	Ressort	Feder
21	2.644.000.099	Sacchetto accessori	Accessories bag	Sachet accessoires	Beutel
22	1.127.126.043	Scatola incasso	Box	Boitier recouvrement	Gehäuse
2+3+ 4+20	1.139.000.002	Telaio alette completo	End frame	Châssis complet	Rahmen komplett

VORTICE ELETTROSOCIALI S.p.A.
Strada Cerca, 2 - frazione di Zoate
20067 TRIBIANO (MI)
Tel. (+39) 02-90.69.91
Fax (+39) 02-90.64.625
ITALIA

VORTICE LIMITED
Beeches House - Eastern
Avenue
Burton on Trent
DE13 0BB
Tel. (+44) 1283-492949
Fax (+44) 1283-544121
UNITED KINGDOM

VORTICE FRANCE
15/33 Rue Le Corbusier
Europarc
94046 CRETEIL Cedex
Tel. (+33) 1-55.12.50.00
Fax (+33) 1-55.12.50.01
FRANCE

COD. 9994000246